

TEST REPORT

APPLICANT
ADDRESS
SAMPLE DESCRIPTION

: PLEASE REFER TO PAGE 7.

STYLE / ITEM NO.

: PLEASE REFER TO PAGE 7.

AGE REQUESTED ON APPLICATION FORM

: NOT PRESENT

LABELED AGE GRADE

 : ITEM NO. 2~5, 12~16: SUITABLE FOR 12 MONTHS AND ABOVE;
 ITEM NO. 1, 6~11: SUITABLE FOR 18 MONTHS AND ABOVE

AGE GRADE APPLIED IN TESTING

: OVER 12 MONTHS

SAMPLE RECEIVED DATE

: DEC. 17, 2014

TEST PERIOD

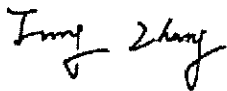
: DEC. 18, 2014 TO DEC. 23, 2014

RESULT SUMMARY

TEST REQUESTED	RESULT
- EN 71 - 1: 2011 + A3: 2014 Mechanical and physical properties	PASS
- EN 71 - 2: 2011 + A1: 2014 Flammability	PASS
- EN 71 - 3: 2013 + A1: 2014 Migration of Certain Elements	PASS

.....FOR FURTHER DETAILS, PLEASE REFER TO THE FOLLOWING PAGE(S).....

SIGNED FOR AND ON BEHALF OF
 EUROFINS TESTING TECHNOLOGY (SHENZHEN) CO. LTD.



Fung Zhang
 Toys Testing Engineer



Harry Chen
 Inorganic Team Supervisor



Coco Luo
 Organic Team Supervisor



This test report is valid for the tested samples only. Without the original samples, this test report is not permitted to be duplicated in extracts.
 This test report does not entitle anyone to make any claim on this or similar products.

EN 71 – 1: 2011 + A3: 2014 Safety of Toys - Mechanical and physical properties

Clause	Requirement	Result
4	General requirements	
4.1	Material cleanliness	P
4.2	Assembly	N/A
4.3	Flexible plastic sheeting	N/A
4.4	Toy bags	N/A
4.5	Glass	N/A
4.6	Expanding materials	N/A
4.7	Edges	P
4.8	Points and metallic wires	P
4.9	Protruding parts	N/A
4.10.1	Folding and sliding mechanisms	N/A
4.10.2	Driving mechanisms	N/A
4.10.3	Hinges	N/A
4.10.4	Springs	N/A
4.11	Mouth-actuated toys and other toys intended to be put in the mouth	N/A
4.12	Balloons	N/A
4.13	Cords of toy kites and other flying toys	N/A
4.14.1	Toys which a child can enter	N/A
4.14.2	Masks and helmets	N/A
4.15.1	Toys propelled by a child or by other means	N/A
4.15.2	Toy bicycles	N/A
4.15.3	Rocking horses and similar toys	N/A
4.15.4	Toys not propelled by a child	N/A
4.15.5	Toy scooters	N/A

TO BE CONTINUED

Eurofins Testing Technology (Shenzhen) Co. Ltd.

3A, F1.6, Tianfa Building, Tian'an Cyber Park, Futian District, Shenzhen City, Guangdong, P. R. China

Tel.: +86 755 8358 5700 • Fax: +86 755 8358 5701 • Email: info.hk@eurofins.com • Website: www.eurofins.com / www.pt.eurofins.com

Clause	Requirement	Result
4.16	Heavy immobile toys	N/A
4.17.1	Projectiles general	N/A
4.17.2	Projectile toys without stored energy	N/A
4.17.3	Projectile toys with stored energy	N/A
4.17.4	Bows and arrows	N/A
4.18	Aquatic toys and inflatable toys	N/A
4.19	Percussion caps specifically designed for use in toys and toys using percussion caps	N/A
4.20	Acoustics	P
4.21	Toys containing a non-electrical heat source	N/A
4.22	Small balls	N/A
4.23.1	Magnets general	N/A
4.23.2	Toys other than magnetic/electrical experimental sets intended for children over 8 years	N/A
4.23.3	Magnetic/electrical experimental sets intended for children over 8 years	N/A
4.24	Yo-yo balls	N/A
4.25	Toys attached to food	N/A
5	Toy intended for children under 36 months	
5.1	General requirements	P
5.2	Soft-filled toys and soft-filled parts of a toy	P
5.3	Plastic sheeting	N/A
5.4	Cords, chains and electrical cables in toys	P
5.5	Liquid-filled toys	N/A
5.6	Speed limitation of electrically-driven ride-on toys	N/A
5.7	Glass and porcelain	N/A
5.8	Shape and size of certain toys	N/A

TO BE CONTINUED

Eurofins Testing Technology (Shenzhen) Co. Ltd.

3A, F1.6, Tianfa Building, Tian'an Cyber Park, Futian District, Shenzhen City, Guangdong, P. R. China

Tel.: +86 755 8358 5700 • Fax: +86 755 8358 5701 • Email: info.hk@eurofins.com • Website: www.eurofins.com / www.pt.eurofins.com

Clause	Requirement	Result
5.9	Toys comprising monofilament fibres	N/A
5.10	Small balls	N/A
5.11	Play figures	N/A
5.12	Hemispheric-shaped toys	N/A
5.13	Suction cups	N/A
5.14	Straps intended to be worn fully or partially around the neck	N/A
6	Packaging	N/A
7	Warnings, markings and instructions for use (Note: It is drawn to your attention that the warnings, precautions and instructions for use should be given in the national language(s) of the country where the product is sold. Only English was reviewed)	
7.1	General	P
7.2	Toys not intended for children under 36 months	N/A
7.3	Latex balloons	N/A
7.4	Aquatic toys	N/A
7.5	Functional toys	N/A
7.6	Hazardous sharp functional edges and points	N/A
7.7.1	Toys with projectiles which are able to discharge an object other than that provided with the toy	N/A
7.7.2	Toys capable of discharging a projectile with a kinetic energy greater than 0.08 J	N/A
7.8	Imitation protective masks and helmets	N/A
7.9	Toy kites	N/A
7.10.1	Roller skates, inline skates and skateboards	N/A
7.10.2	Ride-on toys without a braking device	N/A
7.10.3	Electrically-driven ride-on toys	N/A
7.10.4	Instructions for use	N/A

TO BE CONTINUED

Clause	Requirement	Result
7.11	Toys intended to be attached to or strung across a cradle, cot, or perambulator	N/A
7.12	Liquid-filled teethingers	N/A
7.13	Percussion caps specifically designed for use in toys	N/A
7.14	Acoustics	N/A
7.15	Toy bicycles	N/A
7.16	Toys intended to bear the mass of a child	N/A
7.17	Toys comprising monofilament fibres	N/A
7.18	Toy Scooters	N/A
7.19	Rocking horses and similar toys	N/A
7.20	Magnetic/electrical experimental sets	N/A
7.21	Toys with electrical cables exceeding 300 mm in length	N/A
7.22	Toys with cords or chains intended for children of 18 months and over but under 36 months	N/A

Note: P = Pass N/A = Not Applicable

The Toys Safety Directive 2009/48/EC contains marking and labeling requirements with respect to CE marking, importer's & manufacturer's name and address, product identification and washing instruction of the toy. These are not part of the EN 71 requirements but are legally required:

Markings and information required by Directive 2009/48/EC		Location	Result
1	CE mark	Packaging	Present
2	Importer's name and address	Product	Present
	Manufacturer's name and address	Product	Present
3	Product identification	Product	Present
4	Washing/Cleaning instruction	Product	Present

TO BE CONTINUED

EN 71 - 2: 2011 + A1: 2014 Safety of Toys – Flammability

Clause	Requirement	Result
4	Requirements	
4.1	General requirements	P
4.2	Toys to be worn on the head	
4.2.2	Beards, moustaches, wigs etc., made from hair, pile or material with similar features(e.g. free hanging ribbons, paper, cloth strands or other flowing elements), which protrude 50 mm or more from the surface of the toy	N/A
4.2.3	Beards, moustaches, wigs etc., made from hair, pile or material with similar features(e.g. free hanging ribbons, paper, cloth strands or other flowing elements), which protrude less than 50 mm from the surface of the toy	N/A
4.2.4	Full or partial moulded head masks	N/A
4.2.5	Flowing elements of toys to be worn on the head(except those covered by 4.2.2 and 4.2.3), hoods, head-dresses etc. and masks not covered by 4.2.4 which partially or fully cover the head(e.g. fabric and cardboard masks, eye masks, face masks), but excluding those items covered by 4.3	N/A
4.3	Toy disguise costumes and toys intended to be worn by a child in play	N/A
4.4	Toys intended to be entered by a child	N/A
4.5	Soft-filled toys	P

Note: P = Pass N/A = Not Applicable

TO BE CONTINUED

Eurofins Testing Technology (Shenzhen) Co. Ltd.

3A, F1.6, Tianfa Building, Tian'an Cyber Park, Futian District, Shenzhen City, Guangdong, P. R. China

Tel.: +86 755 8358 5700 • Fax: +86 755 8358 5701 • Email: info.hk@eurofins.com • Website: www.eurofins.com / www.pt.eurofins.com

Material list

	STYLE / ITEM NO.	SAMPLE DESCRIPTION
Item 1	PC004205	Baby Birds - Toucan
Item 2	PC003752	Enchanted Puppets - Dragon (Red)
Item 3	PC020252	Finger Puppets - Caterpillar (Green)
Item 4	PC002130	Finger Puppets - Dingle Dangle Scarecrow
Item 5	PC002191	Finger Puppets - Witch (Green)
Item 6	PC003102	Large Birds - Crow
Item 7	PC003104	Large Birds - Scarlet Macaw
Item 8	PC007703	Monsters - Orange Monster
Item 9	PC007704	Sockettes - Lipstick
Item 10	PC007706	Sockettes - Ringo
Item 11	PC007701	Sockettes - Scorch
Item 12	PC008417	Time For Story - Astronaut
Item 13	PC008404	Time For Story - Prince
Item 14	PC007902	Traditional Story Sets - Goldilocks & The Three Bears
Item 15	PC002002	Wilberry Fun - Becky
Item 16	PC007909	Traditional Story Sets - The Three Little Pigs

Testing material No.	Component	Material	Colour	Item No.
1	Head and body of Toucan and Crow	Textile/plastic	Black	1/6
2	Face	Textile/plastic	Yellow	1
3	Face	Textile/plastic	White	1
4	Eyes	Plastic	Transparent	1/6/7/8
5	Beak	Textile	Orange	1
6	Beak	Textile	Brown	1
7	Beak	Textile	Yellow	1
8	Wing	Textile	Dull blue	1
9	Tail of Toucan, mouth of Crow and Scarlet Macaw	Textile	Black	1/6/7
10	Feet	Textile	Blue	1
11	Coating on label	Coating	White and black	1-16
12	Substrate of label	Textile	White	1-16
13	Fabric inside of head	Textile	Multicolor	1
14	Bag of whistle	Textile	Multicolor	1
15	Tip of whistle	Plastic	Semi-transparent	1
16	Binding of whistle	Textile	White	1/6/7/8
17	Beak of Toucan and Crow, ears and mouth of Drgon, hat of Scarecrow(interlayer)	Foam	White	1/2/4/6
18	Beak of Toucan and Crow, hat of Scarecrow(interlayer, mesh)	Textile	White	1/4/6

TO BE CONTINUED

Testing material No.	Component	Material	Colour	Item No.
19	Plastic at reverse side of eyes	Plastic	Blue	1/7/8
20	Plastic at reverse side of eyes	Plastic	Cream	1/6/7/8/9/10/11
21	Horn, ears, eyebrows, nose, wing, hands, feet and tail	Synthetic leather	Golden and white	2
22	Head, body, limbs, wing and tail	Textile	Red and white	2
23	Eyes	Plastic	Transparent	2
24	Teeth	Textile	White	2/10
25	Mouth	Textile	Black	2
26	Tongue	Textile	Red	2
27	Lining of head	Textile	Red	2
28	Wing	Textile	Black	2
33	Sticker at reverse side of eyes (Dragon and Crow)	Textile/glue	White/transparent	2/6/7/8
35	Coating on stick	Coating	Grey	2
37	Head and abdomen	Textile	Green	3
38	Antenna	Textile	Black	3
39	Brede on eyes and mouth of caterpillar	Textile	Black	3
40	Brede on eyes of caterpillar	Textile	White	3
41	Body	Textile	Yellow	3
42	Body	Textile	Green	3
43	Feet	Textile	Green	3
44	Lining	Textile	Green	3
45	Hat and hands	Textile	Blue	4
46	Hat and pants	Textile	Green	4
47	Hair, edge of coat and pants	Textile/plastic	Yellow	4
48	Coating on eyebrows	Coating	Brown	4
49	Coating on eyes, nose and mouth of Scarecrow and Witch	Coating	Black	4/5
50	Coating on eyes and mouth of Scarecrow, eyes of Witch	Coating	White	4/5
51	Coating on nose	Coating	Red	4
52	Substrate of head and hands	Textile	Flesh color	4
53	Collar and shoes	Textile	Brown	4
54	Coat	Textile	Reddish orange	4
55	Button on coat	Textile	Brown	4
56	String on coat	Textile	Brown	4
57	Elastic band on coat	Textile	Pink	4
58	Patch on sleeves	Textile	Green	4
59	Patch on sleeves	Textile	Blue	4
60	Thread on hands	Textile	Black	4
61	Patch on pants	Textile	Brown	4
62	Hat and cape	Textile	Black	5
63	Hat	Textile	Dull green	5
64	Hair	Textile	Black	5
65	Head and hat	Textile	Black	5

TO BE CONTINUED

Testing material No.	Component	Material	Colour	Item No.
66	Coating on eyes	Coating	Brown	5
67	Coating on mouth	Coating	Green	5
68	Head, body and limbs	Textile	Green	5
69	Thread on hands	Textile	Green	5
70	Clothes	Textile	Brown	5
71	Edge of cape and clothes	Textile	Green	5
72	Ribbon on clothes	Textile	Green	5
73	Hip	Textile	White	5
74	Shoes	Synthetic leather	Black	5
75	Beak and feet	Textile	Dark yellow	6/7
76	Wing and tail	Textile	Black	6
77	Fabric inside of head	Textile	Multicolor	6
78	Plastic at reverse side of eyes	Plastic	Orange	6
79	Bag of whistle	Textile	Multicolor	6
80	Tube of whistle	Plastic	Semi-transparent	6/7/8
82	Head and body	Textile/plastic	Red	7
83	Head and wing	Textile/plastic	Yellow	7
84	Wing	Textile/plastic	Blue	7
85	Wing and tail	Textile	Yellow	7
86	Fabric inside of head	Textile	Grey	7
87	Bag of whistle	Textile	Off-white and blue	7
88	Head, body and limbs	Textile/plastic	Reddish orange	8
89	Antenna	Textile	Grey	8
90	Eyes	Textile	Black	8
91	Eyes	Textile	White	8
92	Mouth	Textile	Black	8
93	Mouth	Textile	White	8
94	Tongue	Textile	Green	8
95	Abdomen	Textile/plastic	Green	8
96	Hands and feet	Textile	Black	8
97	Claw of hands and feet	Textile	Black	8
98	Bag of whistle	Textile	Multicolor	8
99	Lining of mouth	Textile	Multicolor	8
100	Antenna of Lipstick, body of Ringo	Textile/plastic	Yellow	9/10
101	Eyes	Textile	Black	9
102	Coating on eyes	Coating	Purple	9/10
103	Coating on eyes	Coating	Black	9/10/11
104	Substrate of eyes	Plastic	White	9/10/11
105	Body and tongue	Textile	Pink	9/11
106	Body of Lipstick and Ringo, ears of Scorch	Textile	Yellow	9/10/11
107	Lip	Textile	Red	9
108	Mouth	Textile	Black	9/11
109	Lining	Textile	White	9/10/11
110	Lining	Textile	Black	9/11

TO BE CONTINUED

Eurofins Testing Technology (Shenzhen) Co. Ltd.

3A, F1.6, Tianfa Building, Tian'an Cyber Park, Futian District, Shenzhen City, Guangdong, P. R. China

Tel.: +86 755 8358 5700 • Fax: +86 755 8358 5701 • Email: info.hk@eurofins.com • Website: www.eurofins.com / www.pt.eurofins.com

Testing material No.	Component	Material	Colour	Item No.
115	Antenna	Textile	Green	10
116	Ears and body of Ringo, body of Scorch	Textile	Blue	10
117	Ears	Synthetic leather	Golden and brown	10
118	Mouth	Textile	Brick red	10
119	Tongue	Textile	Purple	10
120	Ears	Textile	Green	11
121	Coating on eyes	Coating	Blue	11
122	Hook	Plastic	Semi-transparent	12/13
123	Binding of hook	Plastic	Semi-transparent	12/13
124	Head,body,limbs and backpack	Textile	Silvery and black	12
125	Helmet	Plastic	Transparent	12
126	Lining	Textile	Grey	12
129	Hair	Textile/plastic	Brown	13
130	Crown	Synthetic leather	Multicolor	13
131	Head and hands	Textile	Flesh color	13
132	Brede on eyes	Textile	Brown	13
133	Brede on eyes	Textile	Black	13
134	Brede on eyes	Textile	White	13
135	Brede on mouth	Textile	Light golden	13
136	Brede on mouth	Textile	Pink	13
137	Collar	Textile	Blue	13
138	Coating on coat	Coating	Golden	13
139	Coating on coat	Coating	Black	13
140	Coat	Textile	Dark blue	13
141	Thread on hands	Textile	Flesh color	13
142	Cape and pants	Textile	Red	13
143	Cape	Textile	Golden	13
144	Boots	Synthetic leather	Multicolor	13
146	Hair of girl	Textile	Yellow	14
147	Coating on eyes,nose, mouth and eyebrows of girl	Coating	Brown	14
148	Coating on eyes of girl	Coating	White	14
149	Coating on eyes of girl	Coating	Black	14
150	Coating on mouth of girl	Coating	Fuchsia	14
151	Substrate of head and limbs	Textile	Flesh color	14
152	Head of girl	Textile	Yellow	14
153	Skirt of girl	Textile	Blue and white	14
154	Hip of girl	Textile	Blue	14
155	Shoes of girl	Textile	Red	14
156	Ears,nose,hands and sole of bear	Textile	Flesh color	14
157	Eyes of bear and pig	Plastic	Black	14/16
158	Nose of bear	Plastic/flocking	Black	14
159	Thread on mouth	Textile	Brown	14
160	Head,body,hands and feet	Textile	Brown	14
161	Head,body,hands and feet	Textile	Light brown	14
162	Head,body,hands and feet	Textile	Tan	14
163	Limbs	Textile	Brown	14

TO BE CONTINUED

Eurofins Testing Technology (Shenzhen) Co. Ltd.

3A, F1.6, Tianfa Building, Tian'an Cyber Park, Futian District, Shenzhen City, Guangdong, P. R. China

Tel.: +86 755 8358 5700 • Fax: +86 755 8358 5701 • Email: info.hk@eurofins.com • Website: www.eurofins.com / www.pt.eurofins.com

Testing material No.	Component	Material	Colour	Item No.
164	Limbs	Textile	Golden	14
165	Lining	Textile	Brown	14
166	Lining	Textile	Light brown	14
167	Lining	Textile	Tan	14
168	Tie	Textile	Blue	14
169	Collar	Textile	White	14
170	Apron	Textile	White and red	14
171	Ribbon of apron	Textile	Shiny white	14
173	Film on cover of book	Plastic	Transparent	14/16
174a	Printing on pages	Printing	Yellow	14
174b	Printing on pages	Printing	Multicolor	14/16
174c	Printing on pages	Printing	Pink	16
174d	Substrate of pages	Paper/glue	White/transparent	14/16
175	Hair	Textile	Yellow	15
176	Head	Textile	Yellow	15
177	Headband, shoes and skirt	Textile	Pink	15
178	Head and limbs	Textile	Flesh color and pink	15
179	Brede on eyebrows	Textile	Brown	15
180	Brede on eyes	Textile	Blue	15
181	Brede on eyes	Textile	Light blue	15
182	Brede on mouth	Textile	Red	15
183	Collar and sleeves	Plastic	Pink	15
184	Thread on hands	Textile	Flesh color	15
185	Brede on sole	Textile	Black	15
186	Brede on sole	Textile	Pink	15
187	Brede on sole	Textile	Purple	15
188	Nose	Plastic/flocking	Pink	15
189	Ears of wolf	Textile/plastic	Black	16
190	Ears of wolf	Textile	White	16
191	Head, limbs and body of wolf	Textile/plastic	Brown and black	16
192	Head, limbs and body of wolf	Textile/plastic	Light brown	16
193	Eyes of wolf	Plastic	Transparent	16
194	Nose of wolf	Plastic	Black	16
195	Thread on nose of wolf and pig	Textile	Black	16
196	Hat	Textile	Red	16
197	Hat and vest	Textile	Blue	16
198	Hat and vest	Textile	Yellow	16
199	Vest	Textile	Green	16
200	Ribbon on hat	Textile	Blue	16
201	Ribbon on hat	Textile	Green	16
202	Ribbon on hat	Textile	Yellow	16
203	Head and body of pig	Textile	Pink	16
204	Nose and ears of pig	Textile	Pink	16
205	Limbs of pig	Textile	Light yellow	16
206	Hands and feet of pig	Textile	Grey	16
207	Lining	Textile	Pink	16
208	Brede of eyebrows	Textile	Golden	13
210	Brede on sole	Textile	Green	15

TO BE CONTINUED

Eurofins Testing Technology (Shenzhen) Co. Ltd.

3A, F1.6, Tianfa Building, Tian'an Cyber Park, Futian District, Shenzhen City, Guangdong, P. R. China

Tel.: +86 755 8358 5700 • Fax: +86 755 8358 5701 • Email: info.hk@eurofins.com • Website: www.eurofins.com / www.pt.eurofins.com

EN 71-3: 2013 + A1: 2014 - Migration of Certain Elements

Test method : With reference to EN 71-3: Migration of certain elements.
 General Elements analysis was performed by ICP-MS.
 Soluble Chromium(VI) analysis was performed by HPLC-ICP-MS.
 Soluble Organic Tin analysis was performed by GC-MS.

Element	Limit(mg/kg) Category III	MDL (mg/kg)	Material Test Result (mg/kg)				
			1	2	3	4	5
Soluble Aluminium (Al)	70000	10	N.D.	N.D.	N.D.	N.D.	N.D.
Soluble Antimony (Sb)	560	10	N.D.	N.D.	N.D.	N.D.	N.D.
Soluble Arsenic (As)	47	10	N.D.	N.D.	N.D.	N.D.	N.D.
Soluble Barium (Ba)	18750	10	N.D.	N.D.	N.D.	N.D.	N.D.
Soluble Boron (B)	15000	10	N.D.	N.D.	N.D.	N.D.	N.D.
Soluble Cadmium (Cd)	17	10	N.D.	N.D.	N.D.	N.D.	N.D.
Soluble Chromium III (Cr III)	460	5	N.D.	N.D.	N.D.	N.D.	N.D.
Soluble Chromium VI (Cr VI)	0.2	0.2	N.D.	N.D.	N.D.	N.D.	N.D.
Soluble Cobalt (Co)	130	10	N.D.	N.D.	N.D.	N.D.	N.D.
Soluble Copper(Cu)	7700	10	N.D.	N.D.	N.D.	N.D.	N.D.
Soluble Lead (Pb)	160	10	N.D.	N.D.	N.D.	N.D.	N.D.
Soluble Manganese (Mn)	15000	10	N.D.	N.D.	N.D.	N.D.	N.D.
Soluble Mercury (Hg)	94	10	N.D.	N.D.	N.D.	N.D.	N.D.
Soluble Nickel (Ni)	930	10	N.D.	N.D.	N.D.	N.D.	N.D.
Soluble Selenium (Se)	460	10	N.D.	N.D.	N.D.	N.D.	N.D.
Soluble Strontium (Sr)	56000	10	N.D.	N.D.	N.D.	N.D.	N.D.
Soluble Tin (Sn)	180000	4.9	N.D.	N.D.	N.D.	N.D.	N.D.
Soluble Organic Tin	12	0.1	-- [^]	-- [^]	-- [^]	-- [^]	-- [^]
Soluble Zinc (Zn)	46000	10	N.D.	N.D.	N.D.	N.D.	N.D.

Element	Limit(mg/kg) Category III	MDL (mg/kg)	Material Test Result (mg/kg)				
			6	7	8	9	10
Soluble Aluminium (Al)	70000	10	N.D.	N.D.	N.D.	N.D.	N.D.
Soluble Antimony (Sb)	560	10	N.D.	N.D.	N.D.	N.D.	N.D.
Soluble Arsenic (As)	47	10	N.D.	N.D.	N.D.	N.D.	N.D.
Soluble Barium (Ba)	18750	10	N.D.	N.D.	N.D.	N.D.	N.D.
Soluble Boron (B)	15000	10	N.D.	N.D.	N.D.	N.D.	N.D.
Soluble Cadmium (Cd)	17	10	N.D.	N.D.	N.D.	N.D.	N.D.
Soluble Chromium III (Cr III)	460	5	N.D.	N.D.	N.D.	N.D.	N.D.
Soluble Chromium VI (Cr VI)	0.2	0.2	N.D.	N.D.	N.D.	N.D.	N.D.
Soluble Cobalt (Co)	130	10	N.D.	N.D.	N.D.	N.D.	N.D.
Soluble Copper(Cu)	7700	10	N.D.	N.D.	N.D.	N.D.	N.D.
Soluble Lead (Pb)	160	10	N.D.	N.D.	N.D.	N.D.	N.D.
Soluble Manganese (Mn)	15000	10	N.D.	N.D.	N.D.	N.D.	N.D.
Soluble Mercury (Hg)	94	10	N.D.	N.D.	N.D.	N.D.	N.D.
Soluble Nickel (Ni)	930	10	N.D.	N.D.	N.D.	N.D.	N.D.
Soluble Selenium (Se)	460	10	N.D.	N.D.	N.D.	N.D.	N.D.
Soluble Strontium (Sr)	56000	10	N.D.	N.D.	N.D.	N.D.	N.D.
Soluble Tin (Sn)	180000	4.9	N.D.	N.D.	N.D.	N.D.	N.D.
Soluble Organic Tin	12	0.1	-- [^]	-- [^]	-- [^]	-- [^]	-- [^]
Soluble Zinc (Zn)	46000	10	68	N.D.	N.D.	N.D.	N.D.

TO BE CONTINUED

Eurofins Testing Technology (Shenzhen) Co. Ltd.

3A, F1.6, Tianfa Building, Tian'an Cyber Park, Futian District, Shenzhen City, Guangdong, P. R. China

Tel.: +86 755 8358 5700 • Fax: +86 755 8358 5701 • Email: info.hk@eurofins.com • Website: www.eurofins.com / www.pt.eurofins.com

Element	Limit(mg/kg) Category III	MDL (mg/kg)	Material Test Result (mg/kg)				
			11(*1) (15.3mg)	12	13	14	15
Soluble Aluminium (Al)	70000	10	17	61	N.D.	N.D.	N.D.
Soluble Antimony (Sb)	560	10	N.D.	N.D.	N.D.	N.D.	N.D.
Soluble Arsenic (As)	47	10	N.D.	N.D.	N.D.	N.D.	N.D.
Soluble Barium (Ba)	18750	10	N.D.	N.D.	N.D.	17	N.D.
Soluble Boron (B)	15000	10	N.D.	N.D.	N.D.	N.D.	N.D.
Soluble Cadmium (Cd)	17	10	N.D.	N.D.	N.D.	N.D.	N.D.
Soluble Chromium III (Cr III)	460	5	N.D.	N.D.	N.D.	N.D.	N.D.
Soluble Chromium VI (Cr VI)	0.2	0.2	N.D.	N.D.	N.D.	N.D.	N.D.
Soluble Cobalt (Co)	130	10	N.D.	N.D.	N.D.	N.D.	N.D.
Soluble Copper (Cu)	7700	10	N.D.	N.D.	N.D.	N.D.	N.D.
Soluble Lead (Pb)	160	10	N.D.	N.D.	N.D.	N.D.	N.D.
Soluble Manganese (Mn)	15000	10	N.D.	N.D.	N.D.	N.D.	N.D.
Soluble Mercury (Hg)	94	10	N.D.	N.D.	N.D.	N.D.	N.D.
Soluble Nickel (Ni)	930	10	N.D.	N.D.	N.D.	N.D.	N.D.
Soluble Selenium (Se)	460	10	N.D.	N.D.	N.D.	N.D.	N.D.
Soluble Strontium (Sr)	56000	10	N.D.	18	N.D.	N.D.	N.D.
Soluble Tin (Sn)	180000	4.9	N.D.	N.D.	N.D.	N.D.	N.D.
Soluble Organic Tin	12	0.1	— [^]	— [^]	— [^]	— [^]	— [^]
Soluble Zinc (Zn)	46000	10	N.D.	N.D.	N.D.	N.D.	N.D.

Element	Limit(mg/kg) Category III	MDL (mg/kg)	Material Test Result (mg/kg)				
			16(*1) (55.5mg)	17	18	19	20
Soluble Aluminium (Al)	70000	10	N.D.	N.D.	N.D.	N.D.	N.D.
Soluble Antimony (Sb)	560	10	N.D.	N.D.	N.D.	N.D.	N.D.
Soluble Arsenic (As)	47	10	N.D.	N.D.	N.D.	N.D.	N.D.
Soluble Barium (Ba)	18750	10	N.D.	N.D.	14	N.D.	N.D.
Soluble Boron (B)	15000	10	N.D.	N.D.	N.D.	N.D.	N.D.
Soluble Cadmium (Cd)	17	10	N.D.	N.D.	N.D.	N.D.	N.D.
Soluble Chromium III (Cr III)	460	5	N.D.	N.D.	N.D.	N.D.	N.D.
Soluble Chromium VI (Cr VI)	0.2	0.2	N.D.	N.D.	N.D.	N.D.	N.D.
Soluble Cobalt (Co)	130	10	N.D.	N.D.	N.D.	N.D.	N.D.
Soluble Copper (Cu)	7700	10	N.D.	N.D.	N.D.	N.D.	N.D.
Soluble Lead (Pb)	160	10	N.D.	N.D.	N.D.	N.D.	N.D.
Soluble Manganese (Mn)	15000	10	N.D.	N.D.	N.D.	N.D.	N.D.
Soluble Mercury (Hg)	94	10	N.D.	N.D.	N.D.	N.D.	N.D.
Soluble Nickel (Ni)	930	10	N.D.	N.D.	N.D.	N.D.	N.D.
Soluble Selenium (Se)	460	10	N.D.	N.D.	N.D.	N.D.	N.D.
Soluble Strontium (Sr)	56000	10	N.D.	N.D.	N.D.	N.D.	N.D.
Soluble Tin (Sn)	180000	4.9	N.D.	N.D.	N.D.	N.D.	N.D.
Soluble Organic Tin	12	0.1	— [^]	— [^]	— [^]	— [^]	— [^]
Soluble Zinc (Zn)	46000	10	N.D.	N.D.	N.D.	N.D.	N.D.

TO BE CONTINUED

Eurofins Testing Technology (Shenzhen) Co. Ltd.

3A, F1.6, Tianfa Building, Tian'an Cyber Park, Futian District, Shenzhen City, Guangdong, P. R. China

Tel.: +86 755 8358 5700 • Fax: +86 755 8358 5701 • Email: info.hk@eurofins.com • Website: www.eurofins.com / www.pt.eurofins.com

Element	Limit(mg/kg) Category III	MDL (mg/kg)	Material Test Result (mg/kg)				
			21	22	23	24	25
Soluble Aluminium (Al)	70000	10	44	N.D.	N.D.	N.D.	N.D.
Soluble Antimony (Sb)	560	10	N.D.	N.D.	N.D.	N.D.	N.D.
Soluble Arsenic (As)	47	10	N.D.	N.D.	N.D.	N.D.	N.D.
Soluble Barium (Ba)	18750	10	N.D.	N.D.	N.D.	N.D.	24
Soluble Boron (B)	15000	10	N.D.	N.D.	N.D.	N.D.	N.D.
Soluble Cadmium (Cd)	17	10	N.D.	N.D.	N.D.	N.D.	N.D.
Soluble Chromium III (Cr III)	460	5	N.D.	N.D.	N.D.	N.D.	N.D.
Soluble Chromium VI (Cr VI)	0.2	0.2	N.D.	N.D.	N.D.	N.D.	N.D.
Soluble Cobalt (Co)	130	10	N.D.	N.D.	N.D.	N.D.	N.D.
Soluble Copper(Cu)	7700	10	N.D.	N.D.	N.D.	N.D.	N.D.
Soluble Lead (Pb)	160	10	N.D.	N.D.	N.D.	N.D.	N.D.
Soluble Manganese (Mn)	15000	10	N.D.	N.D.	N.D.	N.D.	N.D.
Soluble Mercury (Hg)	94	10	N.D.	N.D.	N.D.	N.D.	N.D.
Soluble Nickel (Ni)	930	10	N.D.	N.D.	N.D.	N.D.	N.D.
Soluble Selenium (Se)	460	10	N.D.	N.D.	N.D.	N.D.	N.D.
Soluble Strontium (Sr)	56000	10	N.D.	N.D.	N.D.	N.D.	N.D.
Soluble Tin (Sn)	180000	4.9	N.D.	N.D.	N.D.	N.D.	N.D.
Soluble Organic Tin	12	0.1	— [^]	— [^]	— [^]	— [^]	— [^]
Soluble Zinc (Zn)	46000	10	N.D.	N.D.	N.D.	11	N.D.

Element	Limit(mg/kg) Category III	MDL (mg/kg)	Material Test Result (mg/kg)				
			26	27	28	33	35
Soluble Aluminium (Al)	70000	10	N.D.	N.D.	N.D.	N.D.	359
Soluble Antimony (Sb)	560	10	N.D.	N.D.	N.D.	N.D.	N.D.
Soluble Arsenic (As)	47	10	N.D.	N.D.	N.D.	N.D.	N.D.
Soluble Barium (Ba)	18750	10	N.D.	N.D.	N.D.	14	382
Soluble Boron (B)	15000	10	N.D.	N.D.	N.D.	N.D.	N.D.
Soluble Cadmium (Cd)	17	10	N.D.	N.D.	N.D.	N.D.	N.D.
Soluble Chromium III (Cr III)	460	5	N.D.	N.D.	N.D.	N.D.	N.D. ^A
Soluble Chromium VI (Cr VI)	0.2	0.2	N.D.	N.D.	N.D.	N.D.	N.D. ^A
Soluble Cobalt (Co)	130	10	N.D.	N.D.	N.D.	N.D.	N.D.
Soluble Copper(Cu)	7700	10	N.D.	N.D.	N.D.	N.D.	N.D.
Soluble Lead (Pb)	160	10	N.D.	N.D.	N.D.	N.D.	N.D.
Soluble Manganese (Mn)	15000	10	N.D.	N.D.	N.D.	N.D.	11
Soluble Mercury (Hg)	94	10	N.D.	N.D.	N.D.	N.D.	N.D.
Soluble Nickel (Ni)	930	10	N.D.	N.D.	N.D.	N.D.	N.D.
Soluble Selenium (Se)	460	10	N.D.	N.D.	N.D.	N.D.	N.D.
Soluble Strontium (Sr)	56000	10	N.D.	N.D.	N.D.	N.D.	70
Soluble Tin (Sn)	180000	4.9	N.D.	N.D.	N.D.	N.D.	N.D.
Soluble Organic Tin	12	0.1	— [^]	— [^]	— [^]	— [^]	— [^]
Soluble Zinc (Zn)	46000	10	N.D.	N.D.	N.D.	N.D.	207

TO BE CONTINUED

Eurofins Testing Technology (Shenzhen) Co. Ltd.

3A, F1.6, Tianfa Building, Tian'an Cyber Park, Futian District, Shenzhen City, Guangdong, P. R. China

Tel.: +86 755 8358 5700 • Fax: +86 755 8358 5701 • Email: info.hk@eurofins.com • Website: www.eurofins.com / www.pt.eurofins.com

Element	Limit(mg/kg) Category III	MDL (mg/kg)	Material Test Result (mg/kg)				
			37	38	39(*1) (35.3mg)	40(*1) (12.3mg)	41
Soluble Aluminium (Al)	70000	10	N.D.	N.D.	N.D.	N.D.	N.D.
Soluble Antimony (Sb)	560	10	N.D.	N.D.	N.D.	N.D.	N.D.
Soluble Arsenic (As)	47	10	N.D.	N.D.	N.D.	N.D.	N.D.
Soluble Barium (Ba)	18750	10	N.D.	11	N.D.	N.D.	N.D.
Soluble Boron (B)	15000	10	N.D.	N.D.	N.D.	N.D.	N.D.
Soluble Cadmium (Cd)	17	10	N.D.	N.D.	N.D.	N.D.	N.D.
Soluble Chromium III (Cr III)	460	5	N.D.	N.D.	N.D.	N.D.	N.D.
Soluble Chromium VI (Cr VI)	0.2	0.2	N.D.	N.D.	N.D.	N.D.	N.D.
Soluble Cobalt (Co)	130	10	N.D.	N.D.	N.D.	N.D.	N.D.
Soluble Copper(Cu)	7700	10	N.D.	N.D.	N.D.	N.D.	N.D.
Soluble Lead (Pb)	160	10	N.D.	N.D.	N.D.	N.D.	N.D.
Soluble Manganese (Mn)	15000	10	N.D.	N.D.	N.D.	N.D.	N.D.
Soluble Mercury (Hg)	94	10	N.D.	N.D.	N.D.	N.D.	N.D.
Soluble Nickel (Ni)	930	10	N.D.	N.D.	N.D.	N.D.	N.D.
Soluble Selenium (Se)	460	10	N.D.	N.D.	N.D.	N.D.	N.D.
Soluble Strontium (Sr)	56000	10	N.D.	N.D.	N.D.	N.D.	N.D.
Soluble Tin (Sn)	180000	4.9	N.D.	N.D.	N.D.	N.D.	N.D.
Soluble Organic Tin	12	0.1	— [^]	— [^]	— [^]	— [^]	— [^]
Soluble Zinc (Zn)	46000	10	N.D.	N.D.	N.D.	N.D.	N.D.

Element	Limit(mg/kg) Category III	MDL (mg/kg)	Material Test Result (mg/kg)				
			42	43	44	45	46
Soluble Aluminium (Al)	70000	10	N.D.	N.D.	N.D.	N.D.	N.D.
Soluble Antimony (Sb)	560	10	N.D.	N.D.	N.D.	N.D.	N.D.
Soluble Arsenic (As)	47	10	N.D.	N.D.	N.D.	N.D.	N.D.
Soluble Barium (Ba)	18750	10	N.D.	N.D.	N.D.	N.D.	N.D.
Soluble Boron (B)	15000	10	N.D.	N.D.	N.D.	N.D.	N.D.
Soluble Cadmium (Cd)	17	10	N.D.	N.D.	N.D.	N.D.	N.D.
Soluble Chromium III (Cr III)	460	5	N.D.	N.D.	N.D.	N.D.	N.D.
Soluble Chromium VI (Cr VI)	0.2	0.2	N.D.	N.D.	N.D.	N.D.	N.D.
Soluble Cobalt (Co)	130	10	N.D.	N.D.	N.D.	N.D.	N.D.
Soluble Copper(Cu)	7700	10	N.D.	N.D.	N.D.	N.D.	N.D.
Soluble Lead (Pb)	160	10	N.D.	N.D.	N.D.	N.D.	N.D.
Soluble Manganese (Mn)	15000	10	N.D.	N.D.	N.D.	N.D.	N.D.
Soluble Mercury (Hg)	94	10	N.D.	N.D.	N.D.	N.D.	N.D.
Soluble Nickel (Ni)	930	10	N.D.	N.D.	N.D.	N.D.	N.D.
Soluble Selenium (Se)	460	10	N.D.	N.D.	N.D.	N.D.	N.D.
Soluble Strontium (Sr)	56000	10	N.D.	N.D.	N.D.	N.D.	N.D.
Soluble Tin (Sn)	180000	4.9	N.D.	N.D.	N.D.	N.D.	N.D.
Soluble Organic Tin	12	0.1	— [^]	— [^]	— [^]	— [^]	— [^]
Soluble Zinc (Zn)	46000	10	N.D.	N.D.	N.D.	N.D.	N.D.

TO BE CONTINUED

Eurofins Testing Technology (Shenzhen) Co. Ltd.

3A, F1.6, Tianfa Building, Tian'an Cyber Park, Futian District, Shenzhen City, Guangdong, P. R. China

Tel.: +86 755 8358 5700 • Fax: +86 755 8358 5701 • Email: info.hk@eurofins.com • Website: www.eurofins.com / www.pt.eurofins.com

Element	Limit(mg/kg) Category III	MDL (mg/kg)	Material Test Result (mg/kg)				
			47	48(*2)	49(*2)	50(*1) (10.0mg)	51(*1)
Soluble Aluminium (Al)	70000	10	N.D.	-	-	24	-
Soluble Antimony (Sb)	560	10	N.D.	-	-	N.D.	-
Soluble Arsenic (As)	47	10	N.D.	-	-	N.D.	-
Soluble Barium (Ba)	18750	10	N.D.	-	-	113	-
Soluble Boron (B)	15000	10	N.D.	-	-	N.D.	-
Soluble Cadmium (Cd)	17	10	N.D.	-	-	N.D.	-
Soluble Chromium III (Cr III)	460	5	N.D.	-	-	N.D.	-
Soluble Chromium VI (Cr VI)	0.2	0.2	N.D.	-	-	N.D.	-
Soluble Cobalt (Co)	130	10	N.D.	-	-	N.D.	-
Soluble Copper(Cu)	7700	10	N.D.	-	-	N.D.	-
Soluble Lead (Pb)	160	10	N.D.	-	-	N.D.	-
Soluble Manganese (Mn)	15000	10	N.D.	-	-	N.D.	-
Soluble Mercury (Hg)	94	10	N.D.	-	-	N.D.	-
Soluble Nickel (Ni)	930	10	N.D.	-	-	N.D.	-
Soluble Selenium (Se)	460	10	N.D.	-	-	N.D.	-
Soluble Strontium (Sr)	56000	10	N.D.	-	-	N.D.	-
Soluble Tin (Sn)	180000	4.9	N.D.	-	-	N.D.	-
Soluble Organic Tin	12	0.1	--^	-	-	--^	-
Soluble Zinc (Zn)	46000	10	N.D.	-	-	19	-

Element	Limit(mg/kg) Category III	MDL (mg/kg)	Material Test Result (mg/kg)				
			52	53	54	55(*1) (27.6mg)	56
Soluble Aluminium (Al)	70000	10	N.D.	N.D.	N.D.	N.D.	N.D.
Soluble Antimony (Sb)	560	10	N.D.	N.D.	N.D.	N.D.	N.D.
Soluble Arsenic (As)	47	10	N.D.	N.D.	N.D.	N.D.	N.D.
Soluble Barium (Ba)	18750	10	N.D.	N.D.	N.D.	N.D.	N.D.
Soluble Boron (B)	15000	10	N.D.	N.D.	N.D.	N.D.	N.D.
Soluble Cadmium (Cd)	17	10	N.D.	N.D.	N.D.	N.D.	N.D.
Soluble Chromium III (Cr III)	460	5	N.D.	N.D.	N.D.	N.D.	N.D.
Soluble Chromium VI (Cr VI)	0.2	0.2	N.D.	N.D.	N.D.	N.D.	N.D.
Soluble Cobalt (Co)	130	10	N.D.	N.D.	N.D.	N.D.	N.D.
Soluble Copper(Cu)	7700	10	N.D.	N.D.	N.D.	N.D.	N.D.
Soluble Lead (Pb)	160	10	N.D.	N.D.	N.D.	N.D.	N.D.
Soluble Manganese (Mn)	15000	10	N.D.	N.D.	N.D.	N.D.	N.D.
Soluble Mercury (Hg)	94	10	N.D.	N.D.	N.D.	N.D.	N.D.
Soluble Nickel (Ni)	930	10	N.D.	N.D.	N.D.	N.D.	N.D.
Soluble Selenium (Se)	460	10	N.D.	N.D.	N.D.	N.D.	N.D.
Soluble Strontium (Sr)	56000	10	N.D.	N.D.	N.D.	N.D.	N.D.
Soluble Tin (Sn)	180000	4.9	N.D.	N.D.	N.D.	N.D.	N.D.
Soluble Organic Tin	12	0.1	--^	--^	--^	--^	--^
Soluble Zinc (Zn)	46000	10	N.D.	N.D.	N.D.	N.D.	N.D.

TO BE CONTINUED

Eurofins Testing Technology (Shenzhen) Co. Ltd.

3A, F1.6, Tianfa Building, Tian'an Cyber Park, Futian District, Shenzhen City, Guangdong, P. R. China

Tel.: +86 755 8358 5700 • Fax: +86 755 8358 5701 • Email: info.hk@eurofins.com • Website: www.eurofins.com / www.pt.eurofins.com

Element	Limit(mg/kg) Category III	MDL (mg/kg)	Material Test Result (mg/kg)				
			57(*1) (97.5mg)	58(*1) (57.4mg)	59(*1) (61.0mg)	60(*1) (46.0mg)	61(*1) (43.8mg)
Soluble Aluminium (Al)	70000	10	N.D.	N.D.	731	N.D.	38
Soluble Antimony (Sb)	560	10	N.D.	N.D.	N.D.	N.D.	N.D.
Soluble Arsenic (As)	47	10	N.D.	N.D.	N.D.	N.D.	N.D.
Soluble Barium (Ba)	18750	10	16	N.D.	214	N.D.	N.D.
Soluble Boron (B)	15000	10	N.D.	N.D.	N.D.	N.D.	N.D.
Soluble Cadmium (Cd)	17	10	N.D.	N.D.	N.D.	N.D.	N.D.
Soluble Chromium III (Cr III)	460	5	N.D.	N.D.	N.D.	N.D.	N.D.
Soluble Chromium VI (Cr VI)	0.2	0.2	N.D.	N.D.	N.D.	N.D.	N.D.
Soluble Cobalt (Co)	130	10	N.D.	N.D.	N.D.	N.D.	N.D.
Soluble Copper(Cu)	7700	10	N.D.	N.D.	N.D.	N.D.	N.D.
Soluble Lead (Pb)	160	10	N.D.	N.D.	N.D.	N.D.	N.D.
Soluble Manganese (Mn)	15000	10	N.D.	N.D.	N.D.	N.D.	N.D.
Soluble Mercury (Hg)	94	10	N.D.	N.D.	N.D.	N.D.	N.D.
Soluble Nickel (Ni)	930	10	N.D.	N.D.	N.D.	N.D.	N.D.
Soluble Selenium (Se)	460	10	N.D.	N.D.	N.D.	N.D.	N.D.
Soluble Strontium (Sr)	56000	10	N.D.	N.D.	N.D.	N.D.	N.D.
Soluble Tin (Sn)	180000	4.9	N.D.	N.D.	N.D.	N.D.	N.D.
Soluble Organic Tin	12	0.1	— [^]	— [^]	— [^]	— [^]	— [^]
Soluble Zinc (Zn)	46000	10	323	38	53	N.D.	37

Element	Limit(mg/kg) Category III	MDL (mg/kg)	Material Test Result (mg/kg)				
			62	63	64	65	66(*2)
Soluble Aluminium (Al)	70000	10	N.D.	N.D.	N.D.	N.D.	-
Soluble Antimony (Sb)	560	10	N.D.	N.D.	N.D.	N.D.	-
Soluble Arsenic (As)	47	10	N.D.	N.D.	N.D.	N.D.	-
Soluble Barium (Ba)	18750	10	N.D.	N.D.	N.D.	N.D.	-
Soluble Boron (B)	15000	10	N.D.	N.D.	N.D.	N.D.	-
Soluble Cadmium (Cd)	17	10	N.D.	N.D.	N.D.	N.D.	-
Soluble Chromium III (Cr III)	460	5	N.D.	N.D.	N.D.	N.D.	-
Soluble Chromium VI (Cr VI)	0.2	0.2	N.D.	N.D.	N.D.	N.D.	-
Soluble Cobalt (Co)	130	10	N.D.	N.D.	N.D.	N.D.	-
Soluble Copper(Cu)	7700	10	N.D.	N.D.	N.D.	N.D.	-
Soluble Lead (Pb)	160	10	N.D.	N.D.	N.D.	N.D.	-
Soluble Manganese (Mn)	15000	10	N.D.	N.D.	N.D.	N.D.	-
Soluble Mercury (Hg)	94	10	N.D.	N.D.	N.D.	N.D.	-
Soluble Nickel (Ni)	930	10	N.D.	N.D.	N.D.	N.D.	-
Soluble Selenium (Se)	460	10	N.D.	N.D.	N.D.	N.D.	-
Soluble Strontium (Sr)	56000	10	N.D.	N.D.	N.D.	N.D.	-
Soluble Tin (Sn)	180000	4.9	N.D.	N.D.	N.D.	N.D.	-
Soluble Organic Tin	12	0.1	— [^]	— [^]	— [^]	— [^]	-
Soluble Zinc (Zn)	46000	10	N.D.	N.D.	N.D.	N.D.	-

TO BE CONTINUED

Eurofins Testing Technology (Shenzhen) Co. Ltd.

3A, F1.6, Tianfa Building, Tian'an Cyber Park, Futian District, Shenzhen City, Guangdong, P. R. China

Tel.: +86 755 8358 5700 • Fax: +86 755 8358 5701 • Email: info.hk@eurofins.com • Website: www.eurofins.com / www.pt.eurofins.com

Element	Limit(mg/kg) Category III	MDL (mg/kg)	Material Test Result (mg/kg)				
			67(*2)	68	69	70	71
Soluble Aluminium (Al)	70000	10	-	N.D.	N.D.	N.D.	N.D.
Soluble Antimony (Sb)	560	10	-	N.D.	N.D.	N.D.	N.D.
Soluble Arsenic (As)	47	10	-	N.D.	N.D.	N.D.	N.D.
Soluble Barium (Ba)	18750	10	-	N.D.	N.D.	N.D.	N.D.
Soluble Boron (B)	15000	10	-	N.D.	N.D.	N.D.	N.D.
Soluble Cadmium (Cd)	17	10	-	N.D.	N.D.	N.D.	N.D.
Soluble Chromium III (Cr III)	460	5	-	N.D.	N.D.	N.D.	N.D.
Soluble Chromium VI (Cr VI)	0.2	0.2	-	N.D.	N.D.	N.D.	N.D.
Soluble Cobalt (Co)	130	10	-	N.D.	N.D.	N.D.	N.D.
Soluble Copper (Cu)	7700	10	-	N.D.	N.D.	N.D.	N.D.
Soluble Lead (Pb)	160	10	-	N.D.	N.D.	N.D.	N.D.
Soluble Manganese (Mn)	15000	10	-	N.D.	N.D.	N.D.	N.D.
Soluble Mercury (Hg)	94	10	-	N.D.	N.D.	N.D.	N.D.
Soluble Nickel (Ni)	930	10	-	N.D.	N.D.	N.D.	N.D.
Soluble Selenium (Se)	460	10	-	N.D.	N.D.	N.D.	N.D.
Soluble Strontium (Sr)	56000	10	-	N.D.	N.D.	N.D.	N.D.
Soluble Tin (Sn)	180000	4.9	-	N.D.	N.D.	N.D.	N.D.
Soluble Organic Tin	12	0.1	-	- [^]	- [^]	- [^]	- [^]
Soluble Zinc (Zn)	46000	10	-	N.D.	N.D.	N.D.	N.D.

Element	Limit(mg/kg) Category III	MDL (mg/kg)	Material Test Result (mg/kg)				
			72	73	74	75	76
Soluble Aluminium (Al)	70000	10	N.D.	N.D.	N.D.	N.D.	12
Soluble Antimony (Sb)	560	10	N.D.	N.D.	N.D.	N.D.	N.D.
Soluble Arsenic (As)	47	10	N.D.	N.D.	N.D.	N.D.	N.D.
Soluble Barium (Ba)	18750	10	N.D.	N.D.	N.D.	N.D.	N.D.
Soluble Boron (B)	15000	10	N.D.	N.D.	N.D.	N.D.	N.D.
Soluble Cadmium (Cd)	17	10	N.D.	N.D.	N.D.	N.D.	N.D.
Soluble Chromium III (Cr III)	460	5	N.D. ^a	N.D.	N.D.	N.D.	N.D.
Soluble Chromium VI (Cr VI)	0.2	0.2	N.D. ^a	N.D.	N.D.	N.D.	N.D.
Soluble Cobalt (Co)	130	10	N.D.	N.D.	N.D.	N.D.	N.D.
Soluble Copper (Cu)	7700	10	N.D.	N.D.	N.D.	N.D.	N.D.
Soluble Lead (Pb)	160	10	N.D.	N.D.	N.D.	N.D.	N.D.
Soluble Manganese (Mn)	15000	10	N.D.	N.D.	N.D.	N.D.	N.D.
Soluble Mercury (Hg)	94	10	N.D.	N.D.	N.D.	N.D.	N.D.
Soluble Nickel (Ni)	930	10	N.D.	N.D.	N.D.	N.D.	N.D.
Soluble Selenium (Se)	460	10	N.D.	N.D.	N.D.	N.D.	N.D.
Soluble Strontium (Sr)	56000	10	N.D.	N.D.	N.D.	N.D.	N.D.
Soluble Tin (Sn)	180000	4.9	N.D.	N.D.	N.D.	N.D.	N.D.
Soluble Organic Tin	12	0.1	- [^]	- [^]	- [^]	- [^]	- [^]
Soluble Zinc (Zn)	46000	10	N.D.	N.D.	N.D.	N.D.	N.D.

TO BE CONTINUED

Eurofins Testing Technology (Shenzhen) Co. Ltd.

3A, F1.6, Tianfa Building, Tian'an Cyber Park, Futian District, Shenzhen City, Guangdong, P. R. China

Tel.: +86 755 8358 5700 • Fax: +86 755 8358 5701 • Email: info.hk@eurofins.com • Website: www.eurofins.com / www.pt.eurofins.com

Element	Limit(mg/kg) Category III	MDL (mg/kg)	Material Test Result (mg/kg)				
			77	78	79	80	82
Soluble Aluminium (Al)	70000	10	N.D.	N.D.	N.D.	N.D.	N.D.
Soluble Antimony (Sb)	560	10	N.D.	N.D.	N.D.	N.D.	N.D.
Soluble Arsenic (As)	47	10	N.D.	N.D.	N.D.	N.D.	N.D.
Soluble Barium (Ba)	18750	10	N.D.	N.D.	N.D.	N.D.	N.D.
Soluble Boron (B)	15000	10	N.D.	N.D.	N.D.	N.D.	N.D.
Soluble Cadmium (Cd)	17	10	N.D.	N.D.	N.D.	N.D.	N.D.
Soluble Chromium III (Cr III)	460	5	N.D.	N.D.	N.D.	N.D.	N.D.
Soluble Chromium VI (Cr VI)	0.2	0.2	N.D.	N.D.	N.D.	N.D.	N.D.
Soluble Cobalt (Co)	130	10	N.D.	N.D.	N.D.	N.D.	N.D.
Soluble Copper(Cu)	7700	10	N.D.	N.D.	N.D.	N.D.	N.D.
Soluble Lead (Pb)	160	10	N.D.	N.D.	N.D.	N.D.	N.D.
Soluble Manganese (Mn)	15000	10	N.D.	N.D.	N.D.	N.D.	N.D.
Soluble Mercury (Hg)	94	10	N.D.	N.D.	N.D.	N.D.	N.D.
Soluble Nickel (Ni)	930	10	N.D.	N.D.	N.D.	N.D.	N.D.
Soluble Selenium (Se)	460	10	N.D.	N.D.	N.D.	N.D.	N.D.
Soluble Strontium (Sr)	56000	10	N.D.	N.D.	N.D.	N.D.	N.D.
Soluble Tin (Sn)	180000	4.9	N.D.	N.D.	N.D.	N.D.	N.D.
Soluble Organic Tin	12	0.1	-- [^]	-- [^]	-- [^]	-- [^]	-- [^]
Soluble Zinc (Zn)	46000	10	N.D.	N.D.	N.D.	N.D.	N.D.

Element	Limit(mg/kg) Category III	MDL (mg/kg)	Material Test Result (mg/kg)				
			83	84	85	86	87
Soluble Aluminium (Al)	70000	10	21	N.D.	N.D.	N.D.	N.D.
Soluble Antimony (Sb)	560	10	N.D.	N.D.	N.D.	N.D.	N.D.
Soluble Arsenic (As)	47	10	N.D.	N.D.	N.D.	N.D.	N.D.
Soluble Barium (Ba)	18750	10	N.D.	N.D.	N.D.	N.D.	N.D.
Soluble Boron (B)	15000	10	N.D.	N.D.	N.D.	N.D.	N.D.
Soluble Cadmium (Cd)	17	10	N.D.	N.D.	N.D.	N.D.	N.D.
Soluble Chromium III (Cr III)	460	5	N.D.	N.D.	N.D.	N.D.	N.D.
Soluble Chromium VI (Cr VI)	0.2	0.2	N.D.	N.D.	N.D.	N.D.	N.D.
Soluble Cobalt (Co)	130	10	N.D.	N.D.	N.D.	N.D.	N.D.
Soluble Copper(Cu)	7700	10	N.D.	N.D.	N.D.	N.D.	N.D.
Soluble Lead (Pb)	160	10	N.D.	N.D.	N.D.	N.D.	N.D.
Soluble Manganese (Mn)	15000	10	N.D.	N.D.	N.D.	N.D.	N.D.
Soluble Mercury (Hg)	94	10	N.D.	N.D.	N.D.	N.D.	N.D.
Soluble Nickel (Ni)	930	10	N.D.	N.D.	N.D.	N.D.	N.D.
Soluble Selenium (Se)	460	10	N.D.	N.D.	N.D.	N.D.	N.D.
Soluble Strontium (Sr)	56000	10	N.D.	N.D.	N.D.	N.D.	N.D.
Soluble Tin (Sn)	180000	4.9	N.D.	N.D.	N.D.	N.D.	N.D.
Soluble Organic Tin	12	0.1	-- [^]	-- [^]	-- [^]	-- [^]	-- [^]
Soluble Zinc (Zn)	46000	10	N.D.	10	N.D.	N.D.	N.D.

TO BE CONTINUED

Eurofins Testing Technology (Shenzhen) Co. Ltd.

3A, F1.6, Tianfa Building, Tian'an Cyber Park, Futian District, Shenzhen City, Guangdong, P. R. China

Tel.: +86 755 8358 5700 • Fax: +86 755 8358 5701 • Email: info.hk@eurofins.com • Website: www.eurofins.com / www.pt.eurofins.com

Element	Limit(mg/kg) Category III	MDL (mg/kg)	Material Test Result (mg/kg)				
			88	89	90	91	92
Soluble Aluminium (Al)	70000	10	N.D.	N.D.	N.D.	N.D.	N.D.
Soluble Antimony (Sb)	560	10	N.D.	N.D.	N.D.	N.D.	N.D.
Soluble Arsenic (As)	47	10	N.D.	N.D.	N.D.	N.D.	N.D.
Soluble Barium (Ba)	18750	10	N.D.	N.D.	N.D.	N.D.	N.D.
Soluble Boron (B)	15000	10	N.D.	N.D.	N.D.	N.D.	N.D.
Soluble Cadmium (Cd)	17	10	N.D.	N.D.	N.D.	N.D.	N.D.
Soluble Chromium III (Cr III)	460	5	N.D.	N.D.	N.D.	N.D.	N.D.
Soluble Chromium VI (Cr VI)	0.2	0.2	N.D.	N.D.	N.D.	N.D.	N.D.
Soluble Cobalt (Co)	130	10	N.D.	N.D.	N.D.	N.D.	N.D.
Soluble Copper(Cu)	7700	10	N.D.	N.D.	N.D.	N.D.	N.D.
Soluble Lead (Pb)	160	10	N.D.	N.D.	N.D.	N.D.	N.D.
Soluble Manganese (Mn)	15000	10	N.D.	N.D.	N.D.	N.D.	N.D.
Soluble Mercury (Hg)	94	10	N.D.	N.D.	N.D.	N.D.	N.D.
Soluble Nickel (Ni)	930	10	N.D.	N.D.	N.D.	N.D.	N.D.
Soluble Selenium (Se)	460	10	N.D.	N.D.	N.D.	N.D.	N.D.
Soluble Strontium (Sr)	56000	10	N.D.	N.D.	N.D.	N.D.	N.D.
Soluble Tin (Sn)	180000	4.9	N.D.	N.D.	N.D.	N.D.	N.D.
Soluble Organic Tin	12	0.1	- [^]	- [^]	- [^]	- [^]	- [^]
Soluble Zinc (Zn)	46000	10	N.D.	N.D.	N.D.	N.D.	N.D.

Element	Limit(mg/kg) Category III	MDL (mg/kg)	Material Test Result (mg/kg)				
			93	94	95	96	97
Soluble Aluminium (Al)	70000	10	N.D.	N.D.	N.D.	N.D.	N.D.
Soluble Antimony (Sb)	560	10	N.D.	N.D.	N.D.	N.D.	10
Soluble Arsenic (As)	47	10	N.D.	N.D.	N.D.	N.D.	N.D.
Soluble Barium (Ba)	18750	10	N.D.	N.D.	N.D.	N.D.	N.D.
Soluble Boron (B)	15000	10	N.D.	N.D.	N.D.	N.D.	N.D.
Soluble Cadmium (Cd)	17	10	N.D.	N.D.	N.D.	N.D.	N.D.
Soluble Chromium III (Cr III)	460	5	N.D.	N.D.	N.D.	N.D.	N.D.
Soluble Chromium VI (Cr VI)	0.2	0.2	N.D.	N.D.	N.D.	N.D.	N.D.
Soluble Cobalt (Co)	130	10	N.D.	N.D.	N.D.	N.D.	N.D.
Soluble Copper(Cu)	7700	10	N.D.	N.D.	N.D.	N.D.	N.D.
Soluble Lead (Pb)	160	10	N.D.	N.D.	N.D.	N.D.	N.D.
Soluble Manganese (Mn)	15000	10	N.D.	N.D.	N.D.	N.D.	N.D.
Soluble Mercury (Hg)	94	10	N.D.	N.D.	N.D.	N.D.	N.D.
Soluble Nickel (Ni)	930	10	N.D.	N.D.	N.D.	N.D.	N.D.
Soluble Selenium (Se)	460	10	N.D.	N.D.	N.D.	N.D.	N.D.
Soluble Strontium (Sr)	56000	10	N.D.	N.D.	N.D.	N.D.	N.D.
Soluble Tin (Sn)	180000	4.9	N.D.	N.D.	N.D.	N.D.	N.D.
Soluble Organic Tin	12	0.1	- [^]	- [^]	- [^]	- [^]	- [^]
Soluble Zinc (Zn)	46000	10	N.D.	N.D.	N.D.	N.D.	N.D.

TO BE CONTINUED

Eurofins Testing Technology (Shenzhen) Co. Ltd.

3A, F1.6, Tianfa Building, Tian'an Cyber Park, Futian District, Shenzhen City, Guangdong, P. R. China

Tel.: +86 755 8358 5700 • Fax: +86 755 8358 5701 • Email: info.hk@eurofins.com • Website: www.eurofins.com / www.pt.eurofins.com

Element	Limit(mg/kg) Category III	MDL (mg/kg)	Material Test Result (mg/kg)				
			98	99	100	101	102(*2)
Soluble Aluminium (Al)	70000	10	N.D.	N.D.	N.D.	773	-
Soluble Antimony (Sb)	560	10	N.D.	N.D.	N.D.	N.D.	-
Soluble Arsenic (As)	47	10	N.D.	N.D.	N.D.	N.D.	-
Soluble Barium (Ba)	18750	10	N.D.	N.D.	N.D.	N.D.	-
Soluble Boron (B)	15000	10	N.D.	N.D.	N.D.	N.D.	-
Soluble Cadmium (Cd)	17	10	N.D.	N.D.	N.D.	N.D.	-
Soluble Chromium III (Cr III)	460	5	N.D.	N.D.	N.D.	N.D. ^A	-
Soluble Chromium VI (Cr VI)	0.2	0.2	N.D.	N.D.	N.D.	N.D. ^A	-
Soluble Cobalt (Co)	130	10	N.D.	N.D.	N.D.	N.D.	-
Soluble Copper(Cu)	7700	10	N.D.	N.D.	N.D.	N.D.	-
Soluble Lead (Pb)	160	10	N.D.	N.D.	N.D.	N.D.	-
Soluble Manganese (Mn)	15000	10	N.D.	N.D.	N.D.	N.D.	-
Soluble Mercury (Hg)	94	10	N.D.	N.D.	N.D.	N.D.	-
Soluble Nickel (Ni)	930	10	N.D.	N.D.	N.D.	N.D.	-
Soluble Selenium (Se)	460	10	N.D.	N.D.	N.D.	N.D.	-
Soluble Strontium (Sr)	56000	10	N.D.	N.D.	N.D.	N.D.	-
Soluble Tin (Sn)	180000	4.9	N.D.	N.D.	N.D.	N.D.	-
Soluble Organic Tin	12	0.1	-- ^A	-- ^A	-- ^A	-- ^A	-
Soluble Zinc (Zn)	46000	10	N.D.	N.D.	N.D.	18	-

Element	Limit(mg/kg) Category III	MDL (mg/kg)	Material Test Result (mg/kg)				
			103(*2)	104	105	106	107
Soluble Aluminium (Al)	70000	10	-	N.D.	N.D.	N.D.	N.D.
Soluble Antimony (Sb)	560	10	-	N.D.	N.D.	N.D.	N.D.
Soluble Arsenic (As)	47	10	-	N.D.	N.D.	N.D.	N.D.
Soluble Barium (Ba)	18750	10	-	N.D.	N.D.	N.D.	N.D.
Soluble Boron (B)	15000	10	-	N.D.	N.D.	N.D.	N.D.
Soluble Cadmium (Cd)	17	10	-	N.D.	N.D.	N.D.	N.D.
Soluble Chromium III (Cr III)	460	5	-	N.D.	N.D.	N.D.	N.D.
Soluble Chromium VI (Cr VI)	0.2	0.2	-	N.D.	N.D.	N.D.	N.D.
Soluble Cobalt (Co)	130	10	-	N.D.	N.D.	N.D.	N.D.
Soluble Copper(Cu)	7700	10	-	N.D.	N.D.	N.D.	N.D.
Soluble Lead (Pb)	160	10	-	N.D.	N.D.	N.D.	N.D.
Soluble Manganese (Mn)	15000	10	-	N.D.	N.D.	N.D.	N.D.
Soluble Mercury (Hg)	94	10	-	N.D.	N.D.	N.D.	N.D.
Soluble Nickel (Ni)	930	10	-	N.D.	N.D.	N.D.	N.D.
Soluble Selenium (Se)	460	10	-	N.D.	N.D.	N.D.	N.D.
Soluble Strontium (Sr)	56000	10	-	N.D.	N.D.	N.D.	N.D.
Soluble Tin (Sn)	180000	4.9	-	N.D.	N.D.	N.D.	N.D.
Soluble Organic Tin	12	0.1	-	-- ^A	-- ^A	-- ^A	-- ^A
Soluble Zinc (Zn)	46000	10	-	N.D.	N.D.	N.D.	N.D.

TO BE CONTINUED

Eurofins Testing Technology (Shenzhen) Co. Ltd.

3A, F1.6, Tianfa Building, Tian'an Cyber Park, Futian District, Shenzhen City, Guangdong, P. R. China

Tel.: +86 755 8358 5700 • Fax: +86 755 8358 5701 • Email: info.hk@eurofins.com • Website: www.eurofins.com / www.pt.eurofins.com

Element	Limit(mg/kg) Category III	MDL (mg/kg)	Material Test Result (mg/kg)				
			108	109	110	115	116
Soluble Aluminium (Al)	70000	10	N.D.	N.D.	N.D.	N.D.	10
Soluble Antimony (Sb)	560	10	N.D.	N.D.	N.D.	N.D.	N.D.
Soluble Arsenic (As)	47	10	N.D.	N.D.	N.D.	N.D.	N.D.
Soluble Barium (Ba)	18750	10	N.D.	N.D.	N.D.	N.D.	N.D.
Soluble Boron (B)	15000	10	N.D.	N.D.	N.D.	N.D.	N.D.
Soluble Cadmium (Cd)	17	10	N.D.	N.D.	N.D.	N.D.	N.D.
Soluble Chromium III (Cr III)	460	5	N.D.	N.D.	N.D.	N.D.	N.D.
Soluble Chromium VI (Cr VI)	0.2	0.2	N.D.	N.D.	N.D.	N.D.	N.D.
Soluble Cobalt (Co)	130	10	N.D.	N.D.	N.D.	N.D.	N.D.
Soluble Copper(Cu)	7700	10	N.D.	N.D.	N.D.	N.D.	N.D.
Soluble Lead (Pb)	160	10	N.D.	N.D.	N.D.	N.D.	N.D.
Soluble Manganese (Mn)	15000	10	N.D.	N.D.	N.D.	N.D.	N.D.
Soluble Mercury (Hg)	94	10	N.D.	N.D.	N.D.	N.D.	N.D.
Soluble Nickel (Ni)	930	10	N.D.	N.D.	N.D.	N.D.	N.D.
Soluble Selenium (Se)	460	10	N.D.	N.D.	N.D.	N.D.	N.D.
Soluble Strontium (Sr)	56000	10	N.D.	N.D.	N.D.	N.D.	N.D.
Soluble Tin (Sn)	180000	4.9	N.D.	N.D.	N.D.	N.D.	N.D.
Soluble Organic Tin	12	0.1	-- [^]	-- [^]	-- [^]	-- [^]	-- [^]
Soluble Zinc (Zn)	46000	10	N.D.	N.D.	N.D.	N.D.	N.D.

Element	Limit(mg/kg) Category III	MDL (mg/kg)	Material Test Result (mg/kg)				
			117	118	119	120	121(*2)
Soluble Aluminium (Al)	70000	10	N.D.	N.D.	N.D.	N.D.	-
Soluble Antimony (Sb)	560	10	N.D.	N.D.	N.D.	N.D.	-
Soluble Arsenic (As)	47	10	N.D.	N.D.	N.D.	N.D.	-
Soluble Barium (Ba)	18750	10	N.D.	N.D.	N.D.	N.D.	-
Soluble Boron (B)	15000	10	N.D.	N.D.	N.D.	N.D.	-
Soluble Cadmium (Cd)	17	10	N.D.	N.D.	N.D.	N.D.	-
Soluble Chromium III (Cr III)	460	5	N.D.	N.D.	N.D.	N.D.	-
Soluble Chromium VI (Cr VI)	0.2	0.2	N.D.	N.D.	N.D.	N.D.	-
Soluble Cobalt (Co)	130	10	N.D.	N.D.	N.D.	N.D.	-
Soluble Copper(Cu)	7700	10	N.D.	N.D.	N.D.	N.D.	-
Soluble Lead (Pb)	160	10	N.D.	N.D.	N.D.	N.D.	-
Soluble Manganese (Mn)	15000	10	N.D.	N.D.	N.D.	N.D.	-
Soluble Mercury (Hg)	94	10	N.D.	N.D.	N.D.	N.D.	-
Soluble Nickel (Ni)	930	10	N.D.	N.D.	N.D.	N.D.	-
Soluble Selenium (Se)	460	10	N.D.	N.D.	N.D.	N.D.	-
Soluble Strontium (Sr)	56000	10	N.D.	N.D.	N.D.	N.D.	-
Soluble Tin (Sn)	180000	4.9	N.D.	N.D.	N.D.	N.D.	-
Soluble Organic Tin	12	0.1	-- [^]	-- [^]	-- [^]	-- [^]	-
Soluble Zinc (Zn)	46000	10	N.D.	N.D.	N.D.	N.D.	-

TO BE CONTINUED

Element	Limit(mg/kg) Category III	MDL (mg/kg)	Material Test Result (mg/kg)				
			122	123(*1) (73.5mg)	124	125	126
Soluble Aluminium (Al)	70000	10	N.D.	N.D.	N.D.	N.D.	N.D.
Soluble Antimony (Sb)	560	10	N.D.	N.D.	N.D.	N.D.	N.D.
Soluble Arsenic (As)	47	10	N.D.	N.D.	N.D.	N.D.	N.D.
Soluble Barium (Ba)	18750	10	N.D.	N.D.	N.D.	N.D.	N.D.
Soluble Boron (B)	15000	10	N.D.	N.D.	N.D.	N.D.	N.D.
Soluble Cadmium (Cd)	17	10	N.D.	N.D.	N.D.	N.D.	N.D.
Soluble Chromium III (Cr III)	460	5	N.D.	N.D.	N.D.	N.D.	N.D.
Soluble Chromium VI (Cr VI)	0.2	0.2	N.D.	N.D.	N.D.	N.D.	N.D.
Soluble Cobalt (Co)	130	10	N.D.	N.D.	N.D.	N.D.	N.D.
Soluble Copper(Cu)	7700	10	N.D.	N.D.	N.D.	N.D.	N.D.
Soluble Lead (Pb)	160	10	N.D.	N.D.	N.D.	N.D.	N.D.
Soluble Manganese (Mn)	15000	10	N.D.	N.D.	N.D.	N.D.	N.D.
Soluble Mercury (Hg)	94	10	N.D.	N.D.	N.D.	N.D.	N.D.
Soluble Nickel (Ni)	930	10	N.D.	N.D.	N.D.	N.D.	N.D.
Soluble Selenium (Se)	460	10	N.D.	N.D.	N.D.	N.D.	N.D.
Soluble Strontium (Sr)	56000	10	N.D.	N.D.	N.D.	N.D.	N.D.
Soluble Tin (Sn)	180000	4.9	N.D.	N.D.	N.D.	N.D.	N.D.
Soluble Organic Tin	12	0.1	— [^]	— [^]	— [^]	— [^]	— [^]
Soluble Zinc (Zn)	46000	10	N.D.	N.D.	15	N.D.	N.D.

Element	Limit(mg/kg) Category III	MDL (mg/kg)	Material Test Result (mg/kg)				
			129	130	131	132	133(*1) (51.0mg)
Soluble Aluminium (Al)	70000	10	N.D.	21	N.D.	N.D.	N.D.
Soluble Antimony (Sb)	560	10	N.D.	N.D.	N.D.	N.D.	N.D.
Soluble Arsenic (As)	47	10	N.D.	N.D.	N.D.	N.D.	N.D.
Soluble Barium (Ba)	18750	10	N.D.	N.D.	N.D.	N.D.	N.D.
Soluble Boron (B)	15000	10	N.D.	N.D.	N.D.	N.D.	N.D.
Soluble Cadmium (Cd)	17	10	N.D.	N.D.	N.D.	N.D.	N.D.
Soluble Chromium III (Cr III)	460	5	N.D.	N.D.	N.D.	N.D.	N.D.
Soluble Chromium VI (Cr VI)	0.2	0.2	N.D.	N.D.	N.D.	N.D.	N.D.
Soluble Cobalt (Co)	130	10	N.D.	N.D.	N.D.	N.D.	N.D.
Soluble Copper(Cu)	7700	10	N.D.	N.D.	N.D.	N.D.	N.D.
Soluble Lead (Pb)	160	10	N.D.	N.D.	N.D.	N.D.	N.D.
Soluble Manganese (Mn)	15000	10	N.D.	N.D.	N.D.	N.D.	N.D.
Soluble Mercury (Hg)	94	10	N.D.	N.D.	N.D.	N.D.	N.D.
Soluble Nickel (Ni)	930	10	N.D.	N.D.	N.D.	N.D.	N.D.
Soluble Selenium (Se)	460	10	N.D.	N.D.	N.D.	N.D.	N.D.
Soluble Strontium (Sr)	56000	10	N.D.	10	N.D.	N.D.	N.D.
Soluble Tin (Sn)	180000	4.9	N.D.	N.D.	N.D.	N.D.	N.D.
Soluble Organic Tin	12	0.1	— [^]	— [^]	— [^]	— [^]	— [^]
Soluble Zinc (Zn)	46000	10	N.D.	N.D.	N.D.	N.D.	N.D.

TO BE CONTINUED

Eurofins Testing Technology (Shenzhen) Co. Ltd.

3A, F1.6, Tianfa Building, Tian'an Cyber Park, Futian District, Shenzhen City, Guangdong, P. R. China

Tel: +86 755 8358 5700 • Fax: +86 755 8358 5701 • Email: info.hk@eurofins.com • Website: www.eurofins.com / www.pt.eurofins.com

Element	Limit(mg/kg) Category III	MDL (mg/kg)	Material Test Result (mg/kg)				
			134(*1) (45.3mg)	135(*1) (52.4mg)	136(*1) (59.1mg)	137	138
Soluble Aluminium (Al)	70000	10	N.D.	N.D.	N.D.	N.D.	31
Soluble Antimony (Sb)	560	10	N.D.	N.D.	N.D.	N.D.	N.D.
Soluble Arsenic (As)	47	10	N.D.	N.D.	N.D.	N.D.	N.D.
Soluble Barium (Ba)	18750	10	N.D.	N.D.	N.D.	N.D.	N.D.
Soluble Boron (B)	15000	10	N.D.	N.D.	N.D.	N.D.	N.D.
Soluble Cadmium (Cd)	17	10	N.D.	N.D.	N.D.	N.D.	N.D.
Soluble Chromium III (Cr III)	460	5	N.D.	N.D.	N.D.	N.D.	N.D.
Soluble Chromium VI (Cr VI)	0.2	0.2	N.D.	N.D.	N.D.	N.D.	N.D.
Soluble Cobalt (Co)	130	10	N.D.	N.D.	N.D.	N.D.	N.D.
Soluble Copper(Cu)	7700	10	N.D.	10	N.D.	N.D.	1.6×10 ³
Soluble Lead (Pb)	160	10	N.D.	N.D.	N.D.	N.D.	N.D.
Soluble Manganese (Mn)	15000	10	N.D.	N.D.	N.D.	N.D.	N.D.
Soluble Mercury (Hg)	94	10	N.D.	N.D.	N.D.	N.D.	N.D.
Soluble Nickel (Ni)	930	10	N.D.	N.D.	N.D.	N.D.	N.D.
Soluble Selenium (Se)	460	10	N.D.	N.D.	N.D.	N.D.	N.D.
Soluble Strontium (Sr)	56000	10	N.D.	N.D.	N.D.	N.D.	N.D.
Soluble Tin (Sn)	180000	4.9	N.D.	N.D.	N.D.	N.D.	N.D.
Soluble Organic Tin	12	0.1	— [^]	— [^]	— [^]	— [^]	— [^]
Soluble Zinc (Zn)	46000	10	N.D.	N.D.	N.D.	N.D.	1.7×10 ³

Element	Limit(mg/kg) Category III	MDL (mg/kg)	Material Test Result (mg/kg)				
			139	140	141(*1) (98.6mg)	142	143
Soluble Aluminium (Al)	70000	10	11	N.D.	N.D.	N.D.	N.D.
Soluble Antimony (Sb)	560	10	N.D.	N.D.	N.D.	N.D.	N.D.
Soluble Arsenic (As)	47	10	N.D.	N.D.	N.D.	N.D.	N.D.
Soluble Barium (Ba)	18750	10	N.D.	N.D.	N.D.	N.D.	N.D.
Soluble Boron (B)	15000	10	N.D.	N.D.	N.D.	N.D.	N.D.
Soluble Cadmium (Cd)	17	10	N.D.	N.D.	N.D.	N.D.	N.D.
Soluble Chromium III (Cr III)	460	5	N.D.	N.D.	N.D.	N.D.	N.D.
Soluble Chromium VI (Cr VI)	0.2	0.2	N.D.	N.D.	N.D.	N.D.	N.D.
Soluble Cobalt (Co)	130	10	N.D.	N.D.	N.D.	N.D.	N.D.
Soluble Copper(Cu)	7700	10	116	N.D.	N.D.	N.D.	N.D.
Soluble Lead (Pb)	160	10	N.D.	N.D.	N.D.	N.D.	N.D.
Soluble Manganese (Mn)	15000	10	N.D.	N.D.	N.D.	N.D.	N.D.
Soluble Mercury (Hg)	94	10	N.D.	N.D.	N.D.	N.D.	N.D.
Soluble Nickel (Ni)	930	10	N.D.	N.D.	N.D.	N.D.	N.D.
Soluble Selenium (Se)	460	10	N.D.	N.D.	N.D.	N.D.	N.D.
Soluble Strontium (Sr)	56000	10	N.D.	N.D.	N.D.	N.D.	N.D.
Soluble Tin (Sn)	180000	4.9	N.D.	N.D.	N.D.	N.D.	N.D.
Soluble Organic Tin	12	0.1	— [^]	— [^]	— [^]	— [^]	— [^]
Soluble Zinc (Zn)	46000	10	109	N.D.	N.D.	N.D.	N.D.

TO BE CONTINUED

Eurofins Testing Technology (Shenzhen) Co. Ltd.

3A, F1.6, Tianfa Building, Tian'an Cyber Park, Futian District, Shenzhen City, Guangdong, P. R. China

Tel.: +86 755 8358 5700 • Fax: +86 755 8358 5701 • Email: info.hk@eurofins.com • Website: www.eurofins.com / www.pt.eurofins.com

Element	Limit(mg/kg) Category III	MDL (mg/kg)	Material Test Result (mg/kg)				
			144	146	147(*2)	148(*2)	149(*2)
Soluble Aluminium (Al)	70000	10	15	N.D.	-	-	-
Soluble Antimony (Sb)	560	10	N.D.	N.D.	-	-	-
Soluble Arsenic (As)	47	10	N.D.	N.D.	-	-	-
Soluble Barium (Ba)	18750	10	N.D.	N.D.	-	-	-
Soluble Boron (B)	15000	10	N.D.	N.D.	-	-	-
Soluble Cadmium (Cd)	17	10	N.D.	N.D.	-	-	-
Soluble Chromium III (Cr III)	460	5	N.D.	N.D.	-	-	-
Soluble Chromium VI (Cr VI)	0.2	0.2	N.D.	N.D.	-	-	-
Soluble Cobalt (Co)	130	10	N.D.	N.D.	-	-	-
Soluble Copper(Cu)	7700	10	960	N.D.	-	-	-
Soluble Lead (Pb)	160	10	N.D.	N.D.	-	-	-
Soluble Manganese (Mn)	15000	10	N.D.	N.D.	-	-	-
Soluble Mercury (Hg)	94	10	N.D.	N.D.	-	-	-
Soluble Nickel (Ni)	930	10	N.D.	N.D.	-	-	-
Soluble Selenium (Se)	460	10	N.D.	N.D.	-	-	-
Soluble Strontium (Sr)	56000	10	N.D.	N.D.	-	-	-
Soluble Tin (Sn)	180000	4.9	N.D.	N.D.	-	-	-
Soluble Organic Tin	12	0.1	- [^]	- [^]	-	-	-
Soluble Zinc (Zn)	46000	10	772	N.D.	-	-	-

Element	Limit(mg/kg) Category III	MDL (mg/kg)	Material Test Result (mg/kg)				
			150(*2)	151	152	153	154
Soluble Aluminium (Al)	70000	10	-	N.D.	N.D.	N.D.	N.D.
Soluble Antimony (Sb)	560	10	-	N.D.	N.D.	N.D.	N.D.
Soluble Arsenic (As)	47	10	-	N.D.	N.D.	N.D.	N.D.
Soluble Barium (Ba)	18750	10	-	N.D.	N.D.	N.D.	N.D.
Soluble Boron (B)	15000	10	-	N.D.	N.D.	N.D.	N.D.
Soluble Cadmium (Cd)	17	10	-	N.D.	N.D.	N.D.	N.D.
Soluble Chromium III (Cr III)	460	5	-	N.D.	N.D.	N.D.	N.D.
Soluble Chromium VI (Cr VI)	0.2	0.2	-	N.D.	N.D.	N.D.	N.D.
Soluble Cobalt (Co)	130	10	-	N.D.	N.D.	N.D.	N.D.
Soluble Copper(Cu)	7700	10	-	17	N.D.	N.D.	N.D.
Soluble Lead (Pb)	160	10	-	N.D.	N.D.	N.D.	N.D.
Soluble Manganese (Mn)	15000	10	-	N.D.	N.D.	N.D.	N.D.
Soluble Mercury (Hg)	94	10	-	N.D.	N.D.	N.D.	N.D.
Soluble Nickel (Ni)	930	10	-	N.D.	N.D.	N.D.	N.D.
Soluble Selenium (Se)	460	10	-	N.D.	N.D.	N.D.	N.D.
Soluble Strontium (Sr)	56000	10	-	N.D.	N.D.	N.D.	N.D.
Soluble Tin (Sn)	180000	4.9	-	N.D.	N.D.	N.D.	N.D.
Soluble Organic Tin	12	0.1	-	- [^]	- [^]	- [^]	- [^]
Soluble Zinc (Zn)	46000	10	-	N.D.	N.D.	N.D.	N.D.

TO BE CONTINUED

Eurofins Testing Technology (Shenzhen) Co. Ltd.

3A, F1.6, Tianfa Building, Tian'an Cyber Park, Futian District, Shenzhen City, Guangdong, P. R. China

Tel.: +86 755 8358 5700 • Fax: +86 755 8358 5701 • Email: info.hk@eurofins.com • Website: www.eurofins.com / www.pt.eurofins.com

Element	Limit(mg/kg) Category III	MDL (mg/kg)	Material Test Result (mg/kg)				
			155	156	157	158	159(*1) (38.4mg)
Soluble Aluminium (Al)	70000	10	N.D.	N.D.	N.D.	N.D.	N.D.
Soluble Antimony (Sb)	560	10	N.D.	N.D.	N.D.	N.D.	N.D.
Soluble Arsenic (As)	47	10	N.D.	N.D.	N.D.	N.D.	N.D.
Soluble Barium (Ba)	18750	10	N.D.	N.D.	N.D.	N.D.	N.D.
Soluble Boron (B)	15000	10	N.D.	N.D.	N.D.	N.D.	N.D.
Soluble Cadmium (Cd)	17	10	N.D.	N.D.	N.D.	N.D.	N.D.
Soluble Chromium III (Cr III)	460	5	N.D.	N.D.	N.D.	N.D.	N.D.
Soluble Chromium VI (Cr VI)	0.2	0.2	N.D.	N.D.	N.D.	N.D.	N.D.
Soluble Cobalt (Co)	130	10	N.D.	N.D.	N.D.	N.D.	N.D.
Soluble Copper(Cu)	7700	10	N.D.	N.D.	N.D.	N.D.	N.D.
Soluble Lead (Pb)	160	10	N.D.	N.D.	N.D.	N.D.	N.D.
Soluble Manganese (Mn)	15000	10	N.D.	N.D.	N.D.	N.D.	N.D.
Soluble Mercury (Hg)	94	10	N.D.	N.D.	N.D.	N.D.	N.D.
Soluble Nickel (Ni)	930	10	N.D.	N.D.	N.D.	N.D.	N.D.
Soluble Selenium (Se)	460	10	N.D.	N.D.	N.D.	N.D.	N.D.
Soluble Strontium (Sr)	56000	10	N.D.	N.D.	N.D.	N.D.	N.D.
Soluble Tin (Sn)	180000	4.9	N.D.	N.D.	N.D.	N.D.	N.D.
Soluble Organic Tin	12	0.1	— [^]	— [^]	— [^]	— [^]	— [^]
Soluble Zinc (Zn)	46000	10	N.D.	N.D.	N.D.	N.D.	N.D.

Element	Limit(mg/kg) Category III	MDL (mg/kg)	Material Test Result (mg/kg)				
			160	161	162	163	164
Soluble Aluminium (Al)	70000	10	N.D.	N.D.	N.D.	N.D.	N.D.
Soluble Antimony (Sb)	560	10	N.D.	N.D.	N.D.	N.D.	N.D.
Soluble Arsenic (As)	47	10	N.D.	N.D.	N.D.	N.D.	N.D.
Soluble Barium (Ba)	18750	10	N.D.	N.D.	N.D.	N.D.	N.D.
Soluble Boron (B)	15000	10	N.D.	N.D.	N.D.	N.D.	N.D.
Soluble Cadmium (Cd)	17	10	N.D.	N.D.	N.D.	N.D.	N.D.
Soluble Chromium III (Cr III)	460	5	N.D.	N.D.	N.D.	N.D.	N.D.
Soluble Chromium VI (Cr VI)	0.2	0.2	N.D.	N.D.	N.D.	N.D.	N.D.
Soluble Cobalt (Co)	130	10	N.D.	N.D.	N.D.	N.D.	N.D.
Soluble Copper(Cu)	7700	10	N.D.	N.D.	N.D.	N.D.	N.D.
Soluble Lead (Pb)	160	10	N.D.	N.D.	N.D.	N.D.	N.D.
Soluble Manganese (Mn)	15000	10	N.D.	N.D.	N.D.	N.D.	N.D.
Soluble Mercury (Hg)	94	10	N.D.	N.D.	N.D.	N.D.	N.D.
Soluble Nickel (Ni)	930	10	N.D.	N.D.	N.D.	N.D.	N.D.
Soluble Selenium (Se)	460	10	N.D.	N.D.	N.D.	N.D.	N.D.
Soluble Strontium (Sr)	56000	10	N.D.	N.D.	N.D.	N.D.	N.D.
Soluble Tin (Sn)	180000	4.9	N.D.	N.D.	N.D.	N.D.	N.D.
Soluble Organic Tin	12	0.1	— [^]	— [^]	— [^]	— [^]	— [^]
Soluble Zinc (Zn)	46000	10	N.D.	N.D.	N.D.	N.D.	N.D.

TO BE CONTINUED

Eurofins Testing Technology (Shenzhen) Co. Ltd.

3A, F1.6, Tianfa Building, Tian'an Cyber Park, Futian District, Shenzhen City, Guangdong, P. R. China

Tel.: +86 755 8358 5700 • Fax: +86 755 8358 5701 • Email: info.hk@eurofins.com • Website: www.eurofins.com / www.pt.eurofins.com

Element	Limit(mg/kg) Category III	MDL (mg/kg)	Material Test Result (mg/kg)				
			165	166	167	168	169
Soluble Aluminium (Al)	70000	10	N.D.	N.D.	N.D.	N.D.	N.D.
Soluble Antimony (Sb)	560	10	N.D.	N.D.	N.D.	N.D.	N.D.
Soluble Arsenic (As)	47	10	N.D.	N.D.	N.D.	N.D.	N.D.
Soluble Barium (Ba)	18750	10	N.D.	N.D.	N.D.	N.D.	N.D.
Soluble Boron (B)	15000	10	N.D.	N.D.	N.D.	N.D.	N.D.
Soluble Cadmium (Cd)	17	10	N.D.	N.D.	N.D.	N.D.	N.D.
Soluble Chromium III (Cr III)	460	5	N.D.	N.D.	N.D.	N.D.	N.D.
Soluble Chromium VI (Cr VI)	0.2	0.2	N.D.	N.D.	N.D.	N.D.	N.D.
Soluble Cobalt (Co)	130	10	N.D.	N.D.	N.D.	N.D.	N.D.
Soluble Copper(Cu)	7700	10	N.D.	N.D.	N.D.	N.D.	N.D.
Soluble Lead (Pb)	160	10	N.D.	N.D.	N.D.	N.D.	N.D.
Soluble Manganese (Mn)	15000	10	N.D.	N.D.	N.D.	N.D.	N.D.
Soluble Mercury (Hg)	94	10	N.D.	N.D.	N.D.	N.D.	N.D.
Soluble Nickel (Ni)	930	10	N.D.	N.D.	N.D.	N.D.	N.D.
Soluble Selenium (Se)	460	10	N.D.	N.D.	N.D.	N.D.	N.D.
Soluble Strontium (Sr)	56000	10	N.D.	N.D.	N.D.	N.D.	N.D.
Soluble Tin (Sn)	180000	4.9	N.D.	N.D.	N.D.	N.D.	N.D.
Soluble Organic Tin	12	0.1	-- [^]	-- [^]	-- [^]	-- [^]	-- [^]
Soluble Zinc (Zn)	46000	10	N.D.	N.D.	N.D.	N.D.	N.D.

Element	Limit(mg/kg) Category III	MDL (mg/kg)	Material Test Result (mg/kg)				
			170	171	173	174 (a+d)	174 (b+d)
Soluble Aluminium (Al)	70000	10	N.D.	N.D.	N.D.	83	106
Soluble Antimony (Sb)	560	10	N.D.	N.D.	N.D.	N.D.	N.D.
Soluble Arsenic (As)	47	10	N.D.	N.D.	N.D.	N.D.	N.D.
Soluble Barium (Ba)	18750	10	N.D.	N.D.	N.D.	N.D.	N.D.
Soluble Boron (B)	15000	10	N.D.	N.D.	N.D.	35	50
Soluble Cadmium (Cd)	17	10	N.D.	N.D.	N.D.	N.D.	N.D.
Soluble Chromium III (Cr III)	460	5	N.D.	N.D.	N.D.	N.D. [^]	N.D. [^]
Soluble Chromium VI (Cr VI)	0.2	0.2	N.D.	N.D.	N.D.	N.D. [^]	N.D. [^]
Soluble Cobalt (Co)	130	10	N.D.	N.D.	N.D.	N.D.	N.D.
Soluble Copper(Cu)	7700	10	N.D.	N.D.	N.D.	N.D.	N.D.
Soluble Lead (Pb)	160	10	N.D.	N.D.	N.D.	N.D.	N.D.
Soluble Manganese (Mn)	15000	10	N.D.	N.D.	N.D.	N.D.	13
Soluble Mercury (Hg)	94	10	N.D.	N.D.	N.D.	N.D.	N.D.
Soluble Nickel (Ni)	930	10	N.D.	N.D.	N.D.	N.D.	N.D.
Soluble Selenium (Se)	460	10	N.D.	N.D.	N.D.	N.D.	N.D.
Soluble Strontium (Sr)	56000	10	N.D.	N.D.	N.D.	51	64
Soluble Tin (Sn)	180000	4.9	N.D.	N.D.	N.D.	N.D.	N.D.
Soluble Organic Tin	12	0.1	-- [^]	-- [^]	-- [^]	-- [^]	-- [^]
Soluble Zinc (Zn)	46000	10	N.D.	N.D.	N.D.	N.D.	N.D.

TO BE CONTINUED

Eurofins Testing Technology (Shenzhen) Co. Ltd.

3A, F1.6, Tianfa Building, Tian'an Cyber Park, Futian District, Shenzhen City, Guangdong, P. R. China

Tel.: +86 755 8358 5700 • Fax: +86 755 8358 5701 • Email: info.hk@eurofins.com • Website: www.eurofins.com / www.pt.eurofins.com

Element	Limit(mg/kg) Category III	MDL (mg/kg)	Material Test Result (mg/kg)				
			174 (c+d)	175	176	177	178
Soluble Aluminium (Al)	70000	10	131	N.D.	N.D.	N.D.	N.D.
Soluble Antimony (Sb)	560	10	N.D.	N.D.	N.D.	N.D.	N.D.
Soluble Arsenic (As)	47	10	N.D.	N.D.	N.D.	N.D.	N.D.
Soluble Barium (Ba)	18750	10	N.D.	N.D.	N.D.	N.D.	N.D.
Soluble Boron (B)	15000	10	52	N.D.	N.D.	N.D.	N.D.
Soluble Cadmium (Cd)	17	10	N.D.	N.D.	N.D.	N.D.	N.D.
Soluble Chromium III (Cr III)	460	5	N.D. ^A	N.D.	N.D.	N.D.	N.D.
Soluble Chromium VI (Cr VI)	0.2	0.2	N.D. ^A	N.D.	N.D.	N.D.	N.D.
Soluble Cobalt (Co)	130	10	N.D.	N.D.	N.D.	N.D.	N.D.
Soluble Copper(Cu)	7700	10	N.D.	N.D.	N.D.	N.D.	N.D.
Soluble Lead (Pb)	160	10	N.D.	N.D.	N.D.	N.D.	N.D.
Soluble Manganese (Mn)	15000	10	15	N.D.	N.D.	N.D.	N.D.
Soluble Mercury (Hg)	94	10	N.D.	N.D.	N.D.	N.D.	N.D.
Soluble Nickel (Ni)	930	10	N.D.	N.D.	N.D.	N.D.	N.D.
Soluble Selenium (Se)	460	10	N.D.	N.D.	N.D.	N.D.	N.D.
Soluble Strontium (Sr)	56000	10	68	N.D.	N.D.	N.D.	N.D.
Soluble Tin (Sn)	180000	4.9	N.D.	N.D.	N.D.	N.D.	N.D.
Soluble Organic Tin	12	0.1	-- ^A	-- ^A	-- ^A	-- ^A	-- ^A
Soluble Zinc (Zn)	46000	10	N.D.	N.D.	N.D.	N.D.	N.D.

Element	Limit(mg/kg) Category III	MDL (mg/kg)	Material Test Result (mg/kg)				
			179(*1) (14.4mg)	180(*1) (33.3mg)	181(*1) (39.7mg)	182(*1) (22.5mg)	183
Soluble Aluminium (Al)	70000	10	N.D.	N.D.	N.D.	N.D.	N.D.
Soluble Antimony (Sb)	560	10	N.D.	N.D.	N.D.	N.D.	N.D.
Soluble Arsenic (As)	47	10	N.D.	N.D.	N.D.	N.D.	N.D.
Soluble Barium (Ba)	18750	10	N.D.	N.D.	N.D.	N.D.	N.D.
Soluble Boron (B)	15000	10	N.D.	N.D.	N.D.	N.D.	N.D.
Soluble Cadmium (Cd)	17	10	N.D.	N.D.	N.D.	N.D.	N.D.
Soluble Chromium III (Cr III)	460	5	N.D.	N.D.	N.D.	N.D.	N.D.
Soluble Chromium VI (Cr VI)	0.2	0.2	N.D.	N.D.	N.D.	N.D.	N.D.
Soluble Cobalt (Co)	130	10	N.D.	N.D.	N.D.	N.D.	N.D.
Soluble Copper(Cu)	7700	10	N.D.	N.D.	N.D.	N.D.	N.D.
Soluble Lead (Pb)	160	10	N.D.	N.D.	N.D.	N.D.	N.D.
Soluble Manganese (Mn)	15000	10	N.D.	N.D.	N.D.	N.D.	N.D.
Soluble Mercury (Hg)	94	10	N.D.	N.D.	N.D.	N.D.	N.D.
Soluble Nickel (Ni)	930	10	N.D.	N.D.	N.D.	N.D.	N.D.
Soluble Selenium (Se)	460	10	N.D.	N.D.	N.D.	N.D.	N.D.
Soluble Strontium (Sr)	56000	10	N.D.	N.D.	N.D.	N.D.	N.D.
Soluble Tin (Sn)	180000	4.9	N.D.	N.D.	N.D.	N.D.	N.D.
Soluble Organic Tin	12	0.1	-- ^A	-- ^A	-- ^A	-- ^A	-- ^A
Soluble Zinc (Zn)	46000	10	N.D.	N.D.	N.D.	N.D.	N.D.

TO BE CONTINUED

Eurofins Testing Technology (Shenzhen) Co. Ltd.

3A, F1.6, Tianfa Building, Tian'an Cyber Park, Futian District, Shenzhen City, Guangdong, P. R. China

Tel.: +86 755 8358 5700 • Fax: +86 755 8358 5701 • Email: info.hk@eurofins.com • Website: www.eurofins.com / www.pt.eurofins.com

Element	Limit(mg/kg) Category III	MDL (mg/kg)	Material Test Result (mg/kg)				
			184(*1) (44.4mg)	185(*1) (21.6mg)	186(*1) (10.0mg)	187(*1) (17.3mg)	188
Soluble Aluminium (Al)	70000	10	N.D.	N.D.	N.D.	N.D.	N.D.
Soluble Antimony (Sb)	560	10	N.D.	N.D.	N.D.	N.D.	N.D.
Soluble Arsenic (As)	47	10	N.D.	N.D.	N.D.	N.D.	N.D.
Soluble Barium (Ba)	18750	10	N.D.	N.D.	N.D.	N.D.	N.D.
Soluble Boron (B)	15000	10	N.D.	N.D.	N.D.	N.D.	N.D.
Soluble Cadmium (Cd)	17	10	N.D.	N.D.	N.D.	N.D.	N.D.
Soluble Chromium III (Cr III)	460	5	N.D.	N.D.	N.D.	N.D.	N.D.
Soluble Chromium VI (Cr VI)	0.2	0.2	N.D.	N.D.	N.D.	N.D.	N.D.
Soluble Cobalt (Co)	130	10	N.D.	N.D.	N.D.	N.D.	N.D.
Soluble Copper(Cu)	7700	10	N.D.	N.D.	N.D.	N.D.	N.D.
Soluble Lead (Pb)	160	10	N.D.	N.D.	N.D.	N.D.	N.D.
Soluble Manganese (Mn)	15000	10	N.D.	N.D.	N.D.	N.D.	N.D.
Soluble Mercury (Hg)	94	10	N.D.	N.D.	N.D.	N.D.	N.D.
Soluble Nickel (Ni)	930	10	N.D.	N.D.	N.D.	N.D.	N.D.
Soluble Selenium (Se)	460	10	N.D.	N.D.	N.D.	N.D.	N.D.
Soluble Strontium (Sr)	56000	10	N.D.	N.D.	N.D.	N.D.	N.D.
Soluble Tin (Sn)	180000	4.9	N.D.	N.D.	N.D.	N.D.	N.D.
Soluble Organic Tin	12	0.1	-- [^]	-- [^]	-- [^]	-- [^]	-- [^]
Soluble Zinc (Zn)	46000	10	N.D.	N.D.	N.D.	N.D.	N.D.

Element	Limit(mg/kg) Category III	MDL (mg/kg)	Material Test Result (mg/kg)				
			189	190	191	192	193
Soluble Aluminium (Al)	70000	10	N.D.	N.D.	N.D.	N.D.	N.D.
Soluble Antimony (Sb)	560	10	N.D.	N.D.	N.D.	N.D.	N.D.
Soluble Arsenic (As)	47	10	N.D.	N.D.	N.D.	N.D.	N.D.
Soluble Barium (Ba)	18750	10	N.D.	N.D.	N.D.	N.D.	N.D.
Soluble Boron (B)	15000	10	N.D.	N.D.	N.D.	N.D.	N.D.
Soluble Cadmium (Cd)	17	10	N.D.	N.D.	N.D.	N.D.	N.D.
Soluble Chromium III (Cr III)	460	5	N.D.	N.D.	N.D.	N.D.	N.D.
Soluble Chromium VI (Cr VI)	0.2	0.2	N.D.	N.D.	N.D.	N.D.	N.D.
Soluble Cobalt (Co)	130	10	N.D.	N.D.	N.D.	N.D.	N.D.
Soluble Copper(Cu)	7700	10	N.D.	N.D.	N.D.	N.D.	N.D.
Soluble Lead (Pb)	160	10	N.D.	N.D.	N.D.	N.D.	N.D.
Soluble Manganese (Mn)	15000	10	N.D.	N.D.	N.D.	N.D.	N.D.
Soluble Mercury (Hg)	94	10	N.D.	N.D.	N.D.	N.D.	N.D.
Soluble Nickel (Ni)	930	10	N.D.	N.D.	N.D.	N.D.	N.D.
Soluble Selenium (Se)	460	10	N.D.	N.D.	N.D.	N.D.	N.D.
Soluble Strontium (Sr)	56000	10	N.D.	N.D.	N.D.	N.D.	N.D.
Soluble Tin (Sn)	180000	4.9	N.D.	N.D.	N.D.	N.D.	N.D.
Soluble Organic Tin	12	0.1	-- [^]	-- [^]	-- [^]	-- [^]	-- [^]
Soluble Zinc (Zn)	46000	10	N.D.	N.D.	N.D.	N.D.	N.D.

TO BE CONTINUED

Eurofins Testing Technology (Shenzhen) Co. Ltd.

3A, F1.6, Tianfa Building, Tian'an Cyber Park, Futian District, Shenzhen City, Guangdong, P. R. China

Tel.: +86 755 8358 5700 • Fax: +86 755 8358 5701 • Email: info.hk@eurofins.com • Website: www.eurofins.com / www.pt.eurofins.com

Element	Limit(mg/kg) Category III	MDL (mg/kg)	Material Test Result (mg/kg)				
			194	195(*1) (55.1mg)	196	197	198
Soluble Aluminium (Al)	70000	10	N.D.	N.D.	N.D.	N.D.	N.D.
Soluble Antimony (Sb)	560	10	N.D.	N.D.	N.D.	N.D.	N.D.
Soluble Arsenic (As)	47	10	N.D.	N.D.	N.D.	N.D.	N.D.
Soluble Barium (Ba)	18750	10	N.D.	N.D.	N.D.	N.D.	N.D.
Soluble Boron (B)	15000	10	N.D.	N.D.	N.D.	N.D.	N.D.
Soluble Cadmium (Cd)	17	10	N.D.	N.D.	N.D.	N.D.	N.D.
Soluble Chromium III (Cr III)	460	5	N.D.	N.D.	N.D.	N.D.	N.D.
Soluble Chromium VI (Cr VI)	0.2	0.2	N.D.	N.D.	N.D.	N.D.	N.D.
Soluble Cobalt (Co)	130	10	N.D.	N.D.	N.D.	N.D.	N.D.
Soluble Copper(Cu)	7700	10	N.D.	N.D.	N.D.	N.D.	N.D.
Soluble Lead (Pb)	160	10	N.D.	N.D.	N.D.	N.D.	N.D.
Soluble Manganese (Mn)	15000	10	N.D.	N.D.	N.D.	N.D.	N.D.
Soluble Mercury (Hg)	94	10	N.D.	N.D.	N.D.	N.D.	N.D.
Soluble Nickel (Ni)	930	10	N.D.	N.D.	N.D.	N.D.	N.D.
Soluble Selenium (Se)	460	10	N.D.	N.D.	N.D.	N.D.	N.D.
Soluble Strontium (Sr)	56000	10	N.D.	N.D.	N.D.	N.D.	N.D.
Soluble Tin (Sn)	180000	4.9	N.D.	N.D.	N.D.	N.D.	N.D.
Soluble Organic Tin	12	0.1	--^	--^	--^	--^	--^
Soluble Zinc (Zn)	46000	10	N.D.	N.D.	N.D.	N.D.	N.D.

Element	Limit(mg/kg) Category III	MDL (mg/kg)	Material Test Result (mg/kg)				
			199	200(*1) (41.7mg)	201(*1) (54.5mg)	202(*1) (47.7mg)	203
Soluble Aluminium (Al)	70000	10	N.D.	N.D.	N.D.	N.D.	N.D.
Soluble Antimony (Sb)	560	10	N.D.	N.D.	N.D.	N.D.	N.D.
Soluble Arsenic (As)	47	10	N.D.	N.D.	N.D.	N.D.	N.D.
Soluble Barium (Ba)	18750	10	N.D.	N.D.	N.D.	N.D.	N.D.
Soluble Boron (B)	15000	10	N.D.	N.D.	N.D.	N.D.	N.D.
Soluble Cadmium (Cd)	17	10	N.D.	N.D.	N.D.	N.D.	N.D.
Soluble Chromium III (Cr III)	460	5	N.D.	N.D.	N.D.	N.D.	N.D.
Soluble Chromium VI (Cr VI)	0.2	0.2	N.D.	N.D.	N.D.	N.D.	N.D.
Soluble Cobalt (Co)	130	10	N.D.	N.D.	N.D.	N.D.	N.D.
Soluble Copper(Cu)	7700	10	N.D.	N.D.	N.D.	N.D.	N.D.
Soluble Lead (Pb)	160	10	N.D.	N.D.	N.D.	N.D.	N.D.
Soluble Manganese (Mn)	15000	10	N.D.	N.D.	N.D.	N.D.	N.D.
Soluble Mercury (Hg)	94	10	N.D.	N.D.	N.D.	N.D.	N.D.
Soluble Nickel (Ni)	930	10	N.D.	N.D.	N.D.	N.D.	N.D.
Soluble Selenium (Se)	460	10	N.D.	N.D.	N.D.	N.D.	N.D.
Soluble Strontium (Sr)	56000	10	N.D.	N.D.	N.D.	N.D.	N.D.
Soluble Tin (Sn)	180000	4.9	N.D.	N.D.	N.D.	N.D.	N.D.
Soluble Organic Tin	12	0.1	--^	--^	--^	--^	--^
Soluble Zinc (Zn)	46000	10	N.D.	N.D.	N.D.	N.D.	N.D.

TO BE CONTINUED

Eurofins Testing Technology (Shenzhen) Co. Ltd.

3A, F1.6, Tianfa Building, Tian'an Cyber Park, Futian District, Shenzhen City, Guangdong, P. R. China

Tel.: +86 755 8358 5700 • Fax: +86 755 8358 5701 • Email: info.hk@eurofins.com • Website: www.eurofins.com / www.pt.eurofins.com

Element	Limit(mg/kg) Category III	MDL (mg/kg)	Material Test Result (mg/kg)				
			204	205	206	207	208
Soluble Aluminium (Al)	70000	10	N.D.	N.D.	N.D.	N.D.	N.D.
Soluble Antimony (Sb)	560	10	N.D.	N.D.	N.D.	N.D.	N.D.
Soluble Arsenic (As)	47	10	N.D.	N.D.	N.D.	N.D.	N.D.
Soluble Barium (Ba)	18750	10	N.D.	N.D.	N.D.	N.D.	N.D.
Soluble Boron (B)	15000	10	N.D.	N.D.	N.D.	N.D.	N.D.
Soluble Cadmium (Cd)	17	10	N.D.	N.D.	N.D.	N.D.	N.D.
Soluble Chromium III (Cr III)	460	5	N.D.	N.D.	N.D.	N.D.	N.D.
Soluble Chromium VI (Cr VI)	0.2	0.2	N.D.	N.D.	N.D.	N.D.	N.D.
Soluble Cobalt (Co)	130	10	N.D.	N.D.	N.D.	N.D.	N.D.
Soluble Copper(Cu)	7700	10	N.D.	N.D.	N.D.	N.D.	N.D.
Soluble Lead (Pb)	160	10	N.D.	N.D.	N.D.	N.D.	N.D.
Soluble Manganese (Mn)	15000	10	N.D.	N.D.	N.D.	N.D.	N.D.
Soluble Mercury (Hg)	94	10	N.D.	N.D.	N.D.	N.D.	N.D.
Soluble Nickel (Ni)	930	10	N.D.	N.D.	N.D.	N.D.	N.D.
Soluble Selenium (Se)	460	10	N.D.	N.D.	N.D.	N.D.	N.D.
Soluble Strontium (Sr)	56000	10	N.D.	N.D.	N.D.	N.D.	N.D.
Soluble Tin (Sn)	180000	4.9	N.D.	N.D.	N.D.	N.D.	N.D.
Soluble Organic Tin	12	0.1	--^	--^	--^	--^	--^
Soluble Zinc (Zn)	46000	10	N.D.	N.D.	N.D.	N.D.	N.D.

Element	Limit(mg/kg) Category III	MDL (mg/kg)	Material Test Result (mg/kg)
			210(*1) (12.9mg)
Soluble Aluminium (Al)	70000	10	N.D.
Soluble Antimony (Sb)	560	10	N.D.
Soluble Arsenic (As)	47	10	N.D.
Soluble Barium (Ba)	18750	10	N.D.
Soluble Boron (B)	15000	10	N.D.
Soluble Cadmium (Cd)	17	10	N.D.
Soluble Chromium III (Cr III)	460	5	N.D.
Soluble Chromium VI (Cr VI)	0.2	0.2	N.D.
Soluble Cobalt (Co)	130	10	N.D.
Soluble Copper(Cu)	7700	10	N.D.
Soluble Lead (Pb)	160	10	N.D.
Soluble Manganese (Mn)	15000	10	N.D.
Soluble Mercury (Hg)	94	10	N.D.
Soluble Nickel (Ni)	930	10	N.D.
Soluble Selenium (Se)	460	10	N.D.
Soluble Strontium (Sr)	56000	10	N.D.
Soluble Tin (Sn)	180000	4.9	N.D.
Soluble Organic Tin	12	0.1	--^
Soluble Zinc (Zn)	46000	10	N.D.

TO BE CONTINUED

Eurofins Testing Technology (Shenzhen) Co. Ltd.

3A, F1.6, Tianfa Building, Tian'an Cyber Park, Futian District, Shenzhen City, Guangdong, P. R. China

Tel.: +86 755 8358 5700 • Fax: +86 755 8358 5701 • Email: info.hk@eurofins.com • Website: www.eurofins.com / www.pt.eurofins.com

Note: - 1 mg/kg = 1 ppm = 0.0001%

- N.D. = Not Detected

- MDL = Method Detection Limit

- Unless specified, determination of Chromium (III) and Chromium (VI) was based on elemental analysis.

- The reported soluble organic tin value was calculated by summation of the migration values of Methyl tin, Butyl tin, Dibutyl tin, Tributyl tin, Tetrabutyl tin, Monoctyl tin, Dioctyl tin, Dipropyl tin, Diphenyl tin and Triphenyl tin.

-^Δ Chromium (III) and Chromium (VI) confirmation test were performed on the tested component.

-[^] Confirmation test of soluble organic tin is not required in case of soluble tin, after conversion, does not exceed the soluble organic tin requirement as specified in EN71-3: 2013 + A1: 2014.

Remark:

*1. The weight of sample marked (*1) available was less than 100mg, but greater than 10mg, so result was calculated as if 100mg of the sample was available.

*2. The weight of sample marked (*2) available was less than 10mg, so the test for soluble heavy metal content was not performed.

Other Information / Remark:

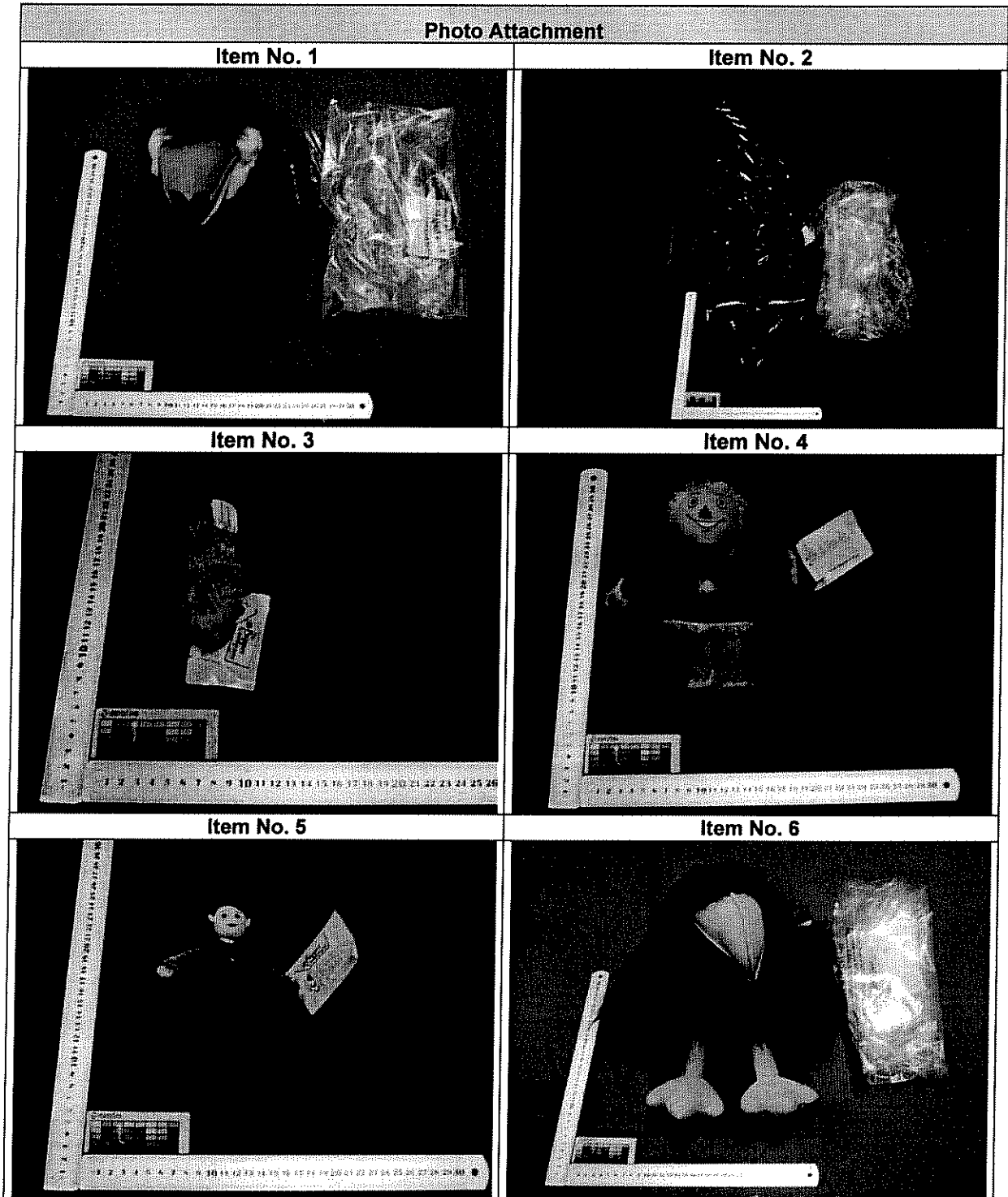
N/A

TO BE CONTINUED

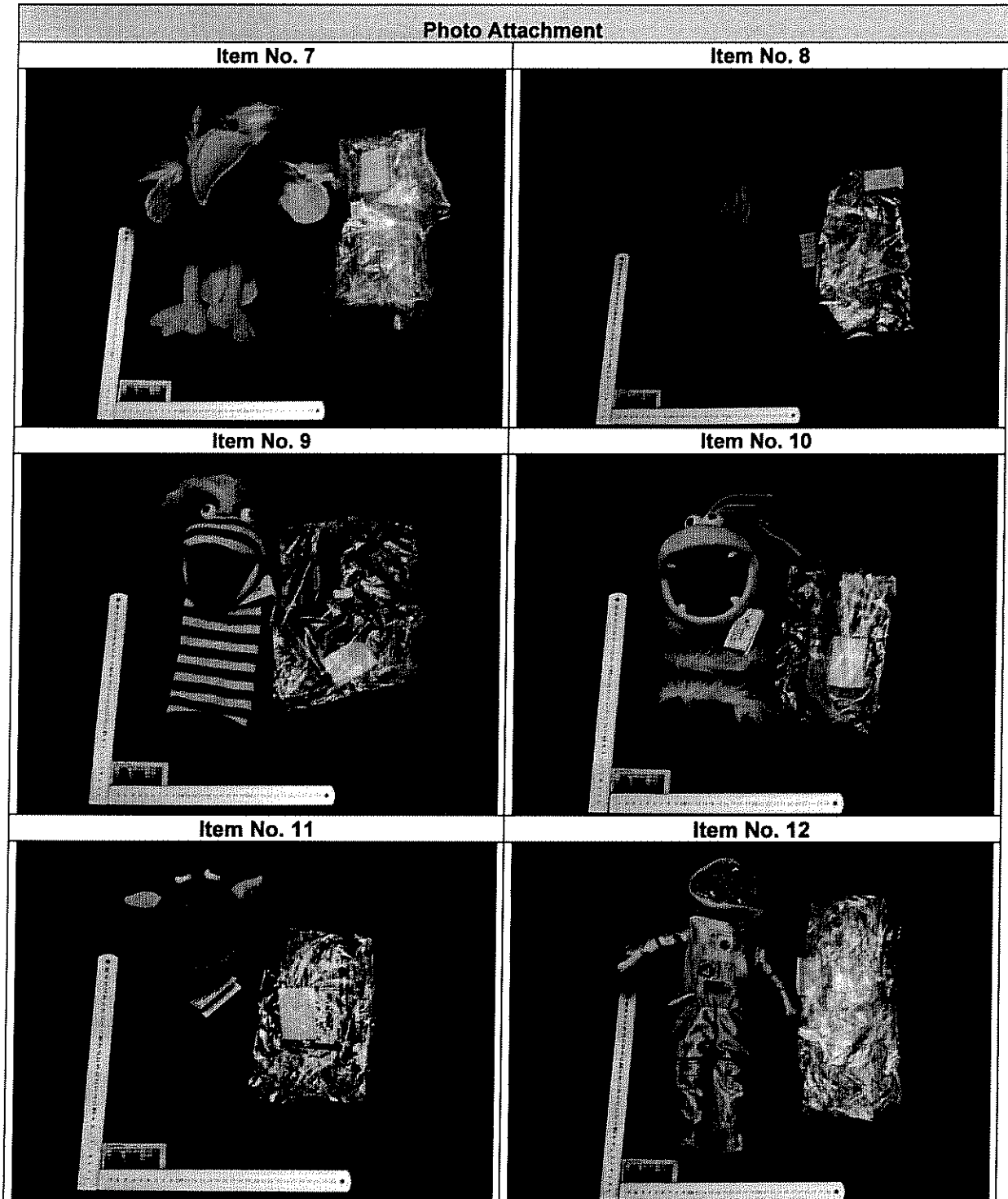
Eurofins Testing Technology (Shenzhen) Co. Ltd.

3A, F1.6, Tianfa Building, Tian'an Cyber Park, Futian District, Shenzhen City, Guangdong, P. R. China

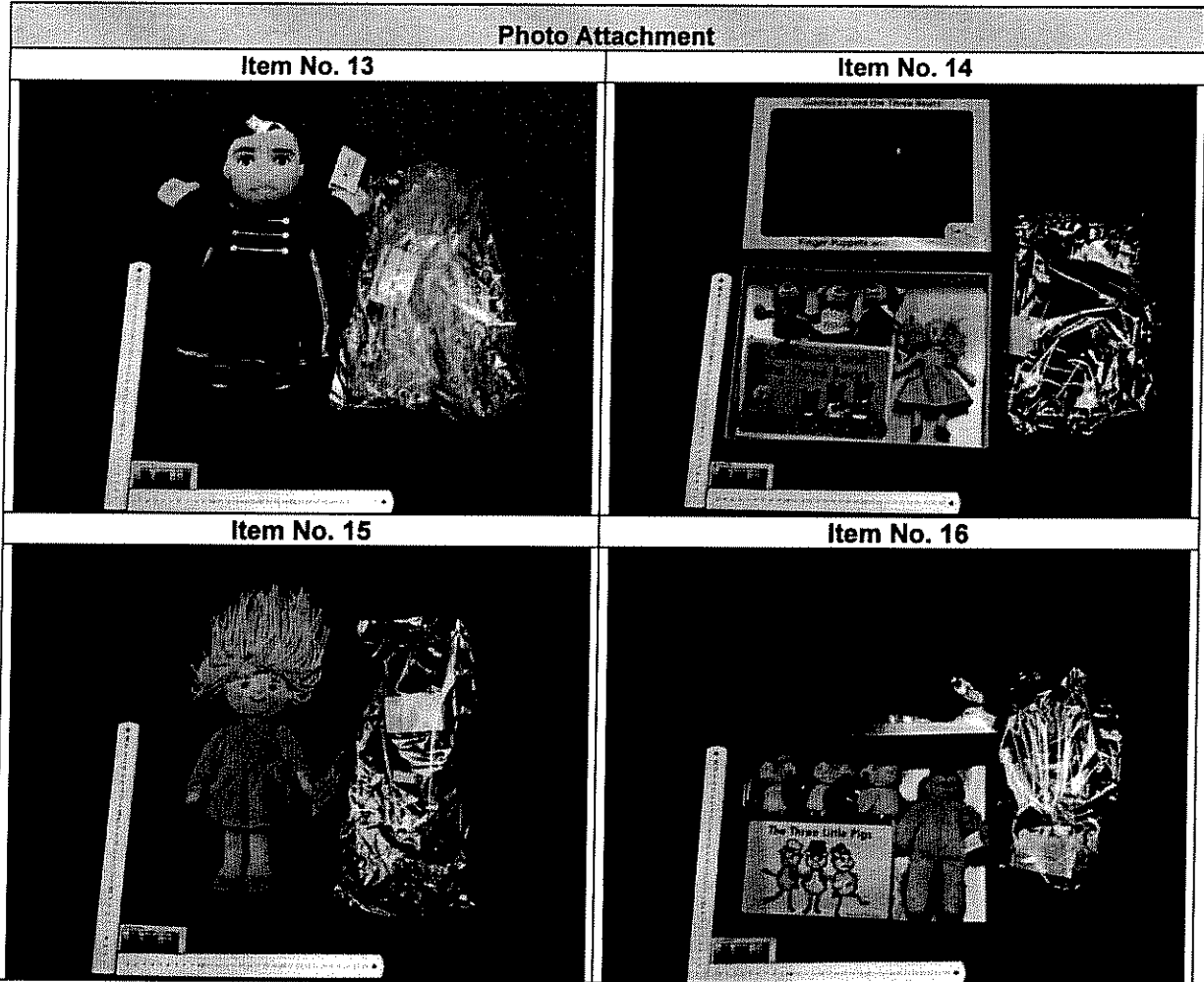
Tel.: +86 755 8358 5700 • Fax: +86 755 8358 5701 • Email: info.hk@eurofins.com • Website: www.eurofins.com / www.pt.eurofins.com



TO BE CONTINUED



TO BE CONTINUED



END OF THE REPORT