



1. Product Name

Home Projector Set

2. Product Code

22944

3. Colour

Typically black

4. Brief Description

Compact but high quality. Projects a sharp image in a darkened environment. Suitable for small spaces and can be used a few metres from your wall.

5. Contents

- 1 x projector
- 1 x tripod
- 2 x speakers
- 1 x remote control
- 1 x power lead
- 1 x storage bag
- 1 x sound card and adapter

6. Snoezelen® Stimulations

- Sight

7. Best Use

Use in a darkened environment with your own imagery and sounds that meet the needs of the users.

8. Compatible ROMPA® Products

Visit www.rompa.com for a wide range of products to use in your Snoezelen® Multi-Sensory Environment.

9. Starting Up

- Attach the projector to the tripod.
- Connect the speakers to the projector.
- Connect the power lead and plug in (2 plugs).
- Insert the sound card
- Use the remote control to select the media to be projected.

10. Detailed Description

Compact but high quality. Projects a sharp image in a darkened environment. Suitable for small spaces and can be used a few metres from your wall. With a light output of over 500 lumens. Includes 16GB micro SD card with both still and moving images such as soothing flower fields, under water scenes, aquarium vistas, forest scapes and waterfalls. The SD card can be expanded or over-written with your own images if you prefer more person-centred content. An alternative to the revolving and repetitive imagery provided by the traditional Snoezelen® LED Projectors which project part of an image at any one time. Includes compact speakers and a table stand. Can be linked to a PC and HDMI cables (neither included).

11. Safety

- Always supervise the use of this product, especially with fibre optics.
- Install the projector out of reach of clients. The projector will become warm with use.
- Use indoors in dry environments. Allow unrestricted airflow around the projector.
- Do not allow clients to pull on the cables.
- Never look directly into the light of the projector. Do not point the projection into someone's eyes.

12. Technical Specification

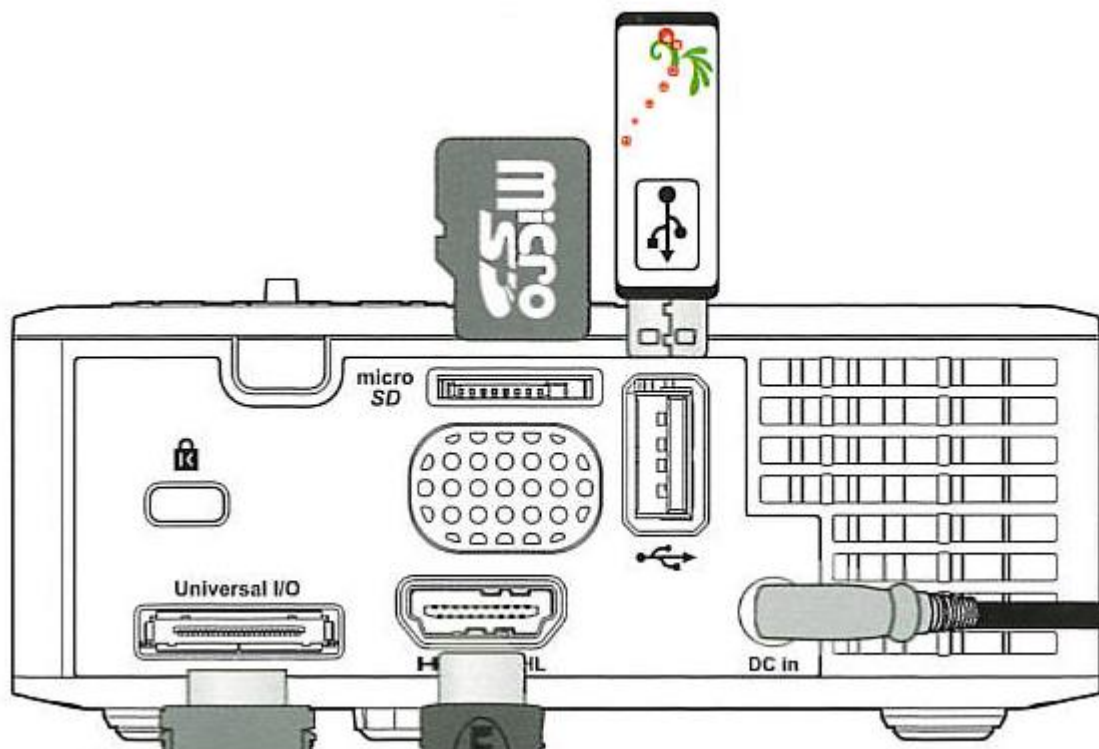
Size: projector 10.5 x 10.5 x 3.7cm

Input: 240v

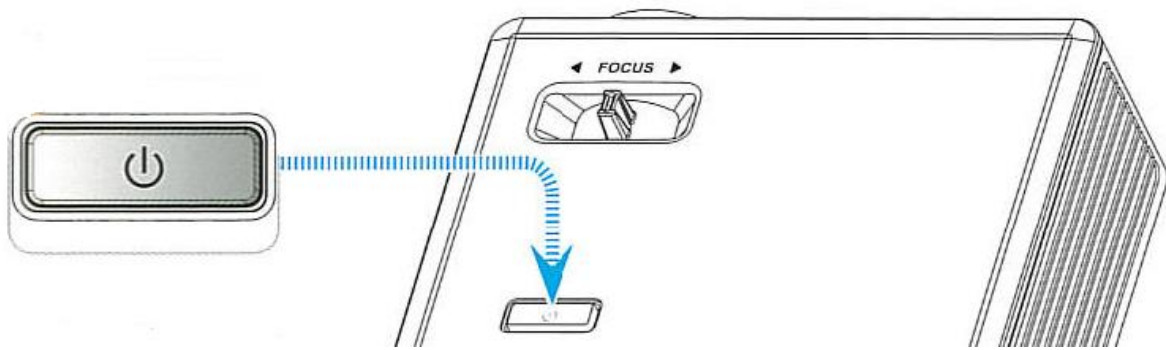
Speakers: 10W

13. Installation

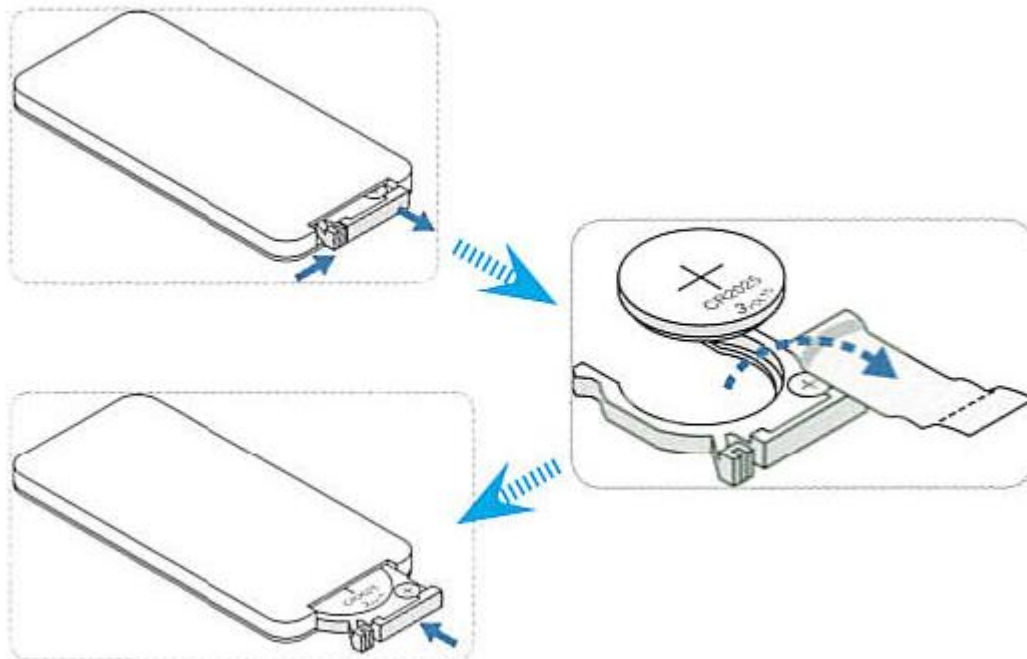
1. Consider the following when choosing the location of your projector:
 - Access to two plug sockets required
 - The projector should be installed out of reach of clients
 - The projector is to be used in dry environments
 - If using a shelf or bracket check that these can comfortably hold the weight of the unit
 - The distance between the projector and the wall or ceiling to be projected onto – the greater the distance the larger the projection.
2. Attach the projector to the tripod. There is a screw connection to the bottom of the projector. The tripod legs are telescopic – adjust till the tripod is at the desired height.
3. Connect the speakers to the projector.
4. Connect the power lead and plug in (2 plugs).
5. Insert the sound card.



6. Switch the projector on (ON/OFF button on the top).



7. Remove the clear transparent tab protecting the battery in the remote control.



8. Use the remote control to select the media to be projected:

Top left red button:	Power ON/OFF
Source:	Choose type of media file e.g. video, photo
Menu:	Access to playlists
Arrows:	Use to scroll through playlists
Enter (in centre of arrows):	Choose to select a file to play
Volume (bottom left):	Increase or decrease volume

Make sure the remote control is pointing towards the projector.

9. Focus the projector using the sliding bar on the top of the projector.
10. Switch in the speakers (using the dial on the speaker) as required.
11. Switch all components off after use.

14. Care and Maintenance

1. The sound card is tiny – take care not to discard it by accident.
2. Replace the battery in the remote control as operation becomes erratic. Use a battery of the same specification: CR2025.
3. Once this product is eventually exhausted, please dispose of it appropriately.

15. Troubleshooting

In the unlikely event of product failure, please check the following:

Problem: Remote control does not work

- Check that the transparent film blocking the battery has been removed
- Change the battery as required.

Make sure the remote control is pointed at the projector without obstacles between the remote and the projector.

Problem: No sound

- Ensure that the speakers are correctly connected.
- Make sure that the speaker is on (turn the dial on the speaker).
- Adjust the volume using the remote control

Problem: No projection

- Ensure that the projector is plugged in and switched on.
- Make sure that the sound card is inserted.
- If you have several cards, make sure that the sound card has content on it (not blank)

Problem: Unclear projection

- Adjust the focus using the sliding bar on the top of the projector.

Please note: model may vary according to availability. Please refer to the instructions included in the product.

Further copies of these instructions can be downloaded at www.rompa.com

We hope you find our instructions invaluable. If you have any suggestions for improving them further your comments will be greatly received – please contact us at producthelp@rompa.com